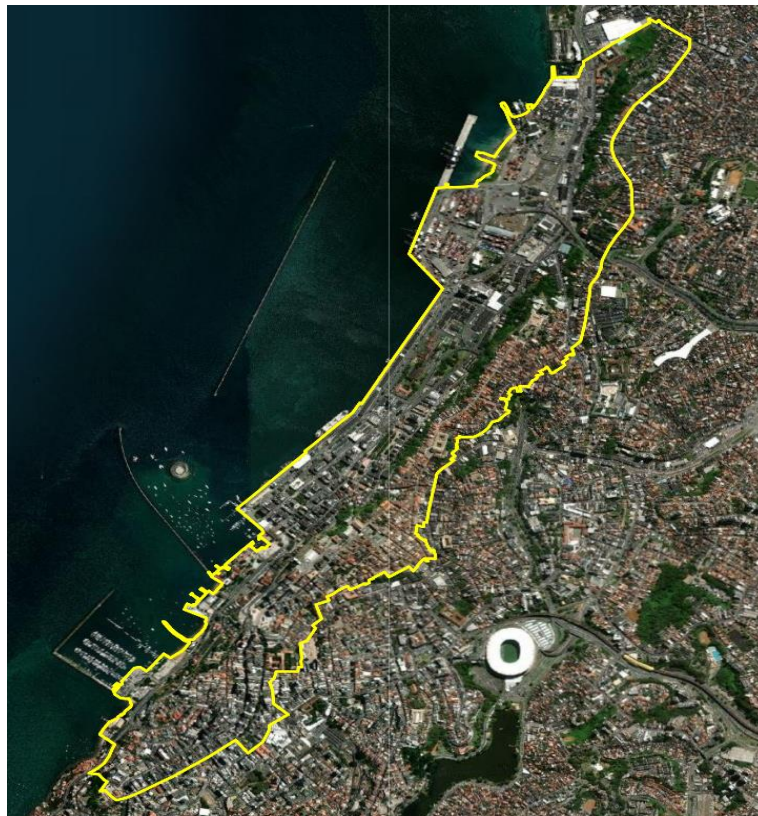


ANEXO I DA LEI Nº 9.767/2023
PROGRAMA DE INCENTIVO A EMPREENDIMENTOS E
MORADIAS – RENOVA CENTRO
REPUBLICADO NO DOM DE 28/12/2023



ANEXO II-A DA LEI 9.767/2023

PROGRAMA LOGÍSTICO DE SALVADOR

POLO LOGÍSTICO VALÉRIA



POLO LOGÍSTICO SÃO TOMÉ



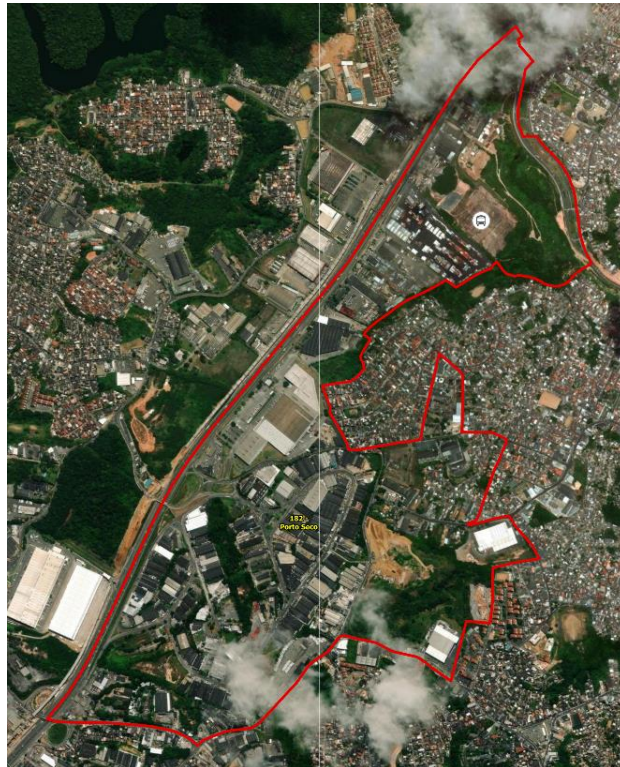
ANEXO II-B DA LEI 9.767/2023

PROGRAMA LOGÍSTICO DE SALVADOR

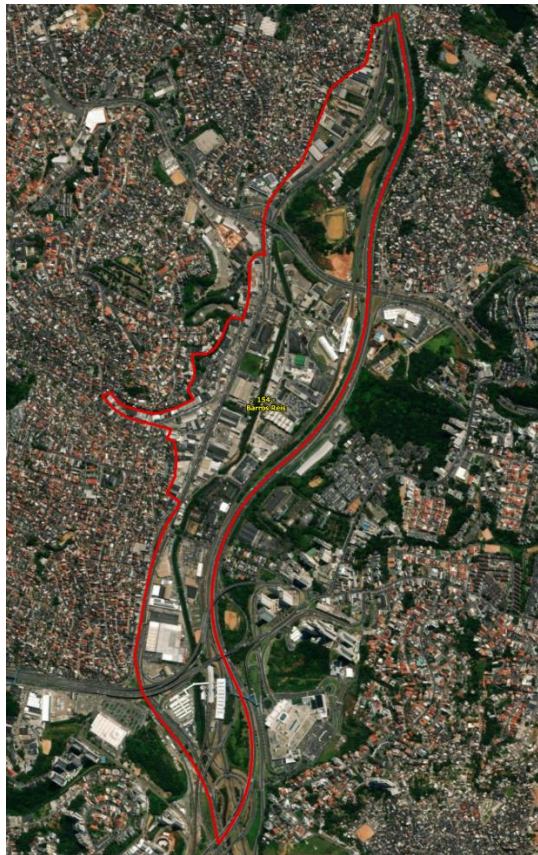
POLO LOGÍSTICO BR-324-II



POLO LOGÍSTICO PORTO SECO



POLO LOGÍSTICO BARROS REIS



ANEXO III DA LEI 9.767/2023

ANEXO ÚNICO DA LEI Nº 8.962/2015

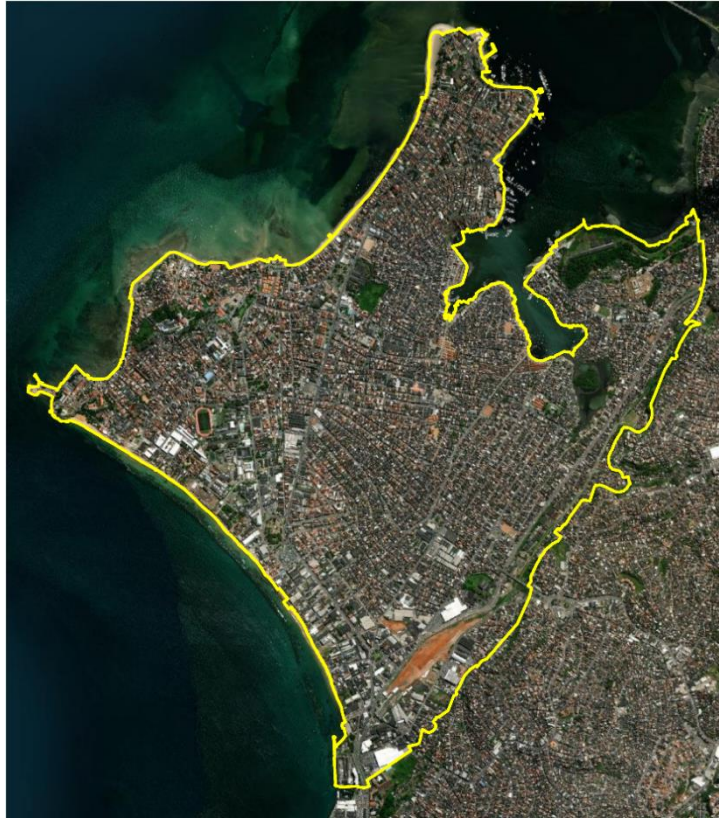
PIDI – BARRA



ANEXO III DA 9.767/2023

ANEXO ÚNICO DA LEI Nº 8.962/2015

PIDI - ITAPAGIPE



COORDENADAS DA POLIGONAL ITAPAGIPE

PONTO	X	Y
1	555.214,83	8.571.507,09
2	555.220,41	8.571.509,25
3	555.219,87	8.571.510,48
4	555.217,97	8.571.514,14
5	555.216,46	8.571.515,79
6	555.215,07	8.571.517,66
7	555.214,37	8.571.518,87
8	555.213,46	8.571.521,73
9	555.213,57	8.571.524,89
10	555.207,94	8.571.531,70
11	555.227,92	8.571.544,87
12	555.224,78	8.571.549,13
13	555.232,90	8.571.554,45
14	555.237,09	8.571.548,96
15	555.236,42	8.571.548,54
16	555.237,98	8.571.546,29
17	555.249,74	8.571.551,53
18	555.243,81	8.571.571,09
19	555.244,49	8.571.571,55
20	555.244,25	8.571.572,49
21	555.243,92	8.571.575,49
22	555.244,21	8.571.577,77
23	555.244,51	8.571.579,34

PONTO	X	Y
24	555.246,49	8.571.582,75
25	555.249,16	8.571.584,81
26	555.250,56	8.571.585,14
27	555.252,14	8.571.586,06
28	555.253,86	8.571.587,65
29	555.255,84	8.571.588,55
30	555.258,19	8.571.589,08
31	555.261,19	8.571.589,24
32	555.263,65	8.571.589,39
33	555.266,61	8.571.590,71
34	555.269,18	8.571.592,58
35	555.270,67	8.571.594,67
36	555.272,39	8.571.596,77
37	555.276,77	8.571.599,58
38	555.279,30	8.571.600,24
39	555.282,23	8.571.601,87
40	555.284,07	8.571.603,56
41	555.286,90	8.571.604,55
42	555.288,58	8.571.606,25
43	555.289,10	8.571.607,32
44	555.290,22	8.571.608,14
45	555.294,87	8.571.610,56
46	555.297,99	8.571.611,86
47	555.301,49	8.571.613,86
48	555.303,16	8.571.615,45
49	555.307,89	8.571.617,65
50	555.312,05	8.571.619,58
51	555.314,65	8.571.620,92
52	555.319,10	8.571.623,87
53	555.322,73	8.571.625,92
54	555.327,41	8.571.629,21
55	555.331,35	8.571.630,54
56	555.336,10	8.571.633,12
57	555.338,51	8.571.635,34
58	555.342,44	8.571.637,38
59	555.344,48	8.571.638,95
60	555.346,37	8.571.642,19
61	555.349,29	8.571.644,42
62	555.352,61	8.571.644,91
63	555.355,44	8.571.645,83
64	555.361,19	8.571.649,79
65	555.365,48	8.571.651,99
66	555.366,91	8.571.652,98
67	555.367,79	8.571.654,36
68	555.372,32	8.571.657,94
69	555.375,13	8.571.660,81
70	555.378,31	8.571.662,91
71	555.380,33	8.571.663,31
72	555.382,34	8.571.664,67
73	555.384,03	8.571.666,58
74	555.387,00	8.571.667,68
75	555.393,56	8.571.673,47
76	555.394,63	8.571.673,62
77	555.396,13	8.571.675,30
78	555.396,94	8.571.676,92
79	555.399,32	8.571.679,41
80	555.401,15	8.571.680,40
81	555.404,16	8.571.682,71
82	555.405,28	8.571.682,95
83	555.407,53	8.571.684,31

PONTO	X	Y
84	555.407,89	8.571.710,30
85	555.417,14	8.571.672,43
86	555.431,16	8.571.656,32
87	555.433,92	8.571.656,69
88	555.444,52	8.571.657,36
89	555.448,60	8.571.659,56
90	555.454,28	8.571.664,40
91	555.461,89	8.571.668,97
92	555.476,30	8.571.671,36
93	555.487,86	8.571.670,49
94	555.495,22	8.571.671,05
95	555.506,01	8.571.675,37
96	555.520,57	8.571.675,84
97	555.529,45	8.571.674,01
98	555.542,87	8.571.671,50
99	555.560,02	8.571.669,81
100	555.574,90	8.571.667,97
101	555.585,36	8.571.669,90
102	555.597,62	8.571.668,40
103	555.607,52	8.571.662,88
104	555.618,06	8.571.658,02
105	555.633,73	8.571.650,51
106	555.646,18	8.571.641,13
107	555.659,67	8.571.632,41
108	555.667,56	8.571.628,46
109	555.675,58	8.571.624,36
110	555.683,38	8.571.621,75
111	555.694,56	8.571.615,37
112	555.701,40	8.571.610,29
113	555.707,73	8.571.605,74
114	555.716,91	8.571.601,90
115	555.724,96	8.571.596,18
116	555.735,27	8.571.592,26
117	555.744,06	8.571.587,87
118	555.749,54	8.571.583,70
119	555.753,24	8.571.581,51
120	555.761,69	8.571.579,77
121	555.774,38	8.571.571,48
122	555.780,65	8.571.563,21
123	555.782,52	8.571.558,77
124	555.787,38	8.571.556,27
125	555.790,84	8.571.554,70
126	555.793,03	8.571.553,70
127	555.798,10	8.571.554,24
128	555.805,62	8.571.553,64
129	555.811,49	8.571.555,15
130	555.820,46	8.571.557,14
131	555.827,67	8.571.555,34
132	555.828,38	8.571.555,39
133	555.831,48	8.571.557,28
134	555.834,95	8.571.561,55
135	555.843,95	8.571.562,94
136	555.849,68	8.571.560,42
137	555.851,31	8.571.560,42
138	555.852,05	8.571.562,41
139	555.857,28	8.571.571,12
140	555.864,28	8.571.576,61
141	555.874,36	8.571.576,88
142	555.879,37	8.571.576,51
143	555.882,08	8.571.577,42

PONTO	X	Y
144	555.886,60	8.571.579,22
145	555.891,09	8.571.580,24
146	555.896,07	8.571.582,73
147	555.901,23	8.571.583,28
148	555.906,40	8.571.583,46
149	555.908,97	8.571.584,37
150	555.911,92	8.571.587,00
151	555.914,98	8.571.590,94
152	555.920,49	8.571.595,45
153	555.923,22	8.571.596,97
154	555.923,53	8.571.597,68
155	555.923,35	8.571.601,33
156	555.924,90	8.571.609,85
157	555.930,93	8.571.620,25
158	555.936,93	8.571.627,17
159	555.943,44	8.571.633,68
160	555.952,45	8.571.634,80
161	555.955,12	8.571.636,71
162	555.958,37	8.571.641,49
163	555.966,70	8.571.651,62
164	555.974,26	8.571.658,26
165	555.984,63	8.571.665,60
166	555.992,01	8.571.671,46
167	556.000,27	8.571.676,60
168	556.008,82	8.571.681,38
169	556.017,11	8.571.681,38
170	556.022,87	8.571.683,60
171	556.022,68	8.571.684,00
172	556.023,04	8.571.690,35
173	556.025,79	8.571.694,36
174	556.024,88	8.571.695,09
175	556.019,48	8.571.696,02
176	556.013,63	8.571.702,60
177	556.013,31	8.571.711,18
178	556.016,38	8.571.720,11
179	556.022,21	8.571.725,68
180	556.028,28	8.571.730,24
181	556.037,95	8.571.733,31
182	556.044,01	8.571.735,04
183	556.046,12	8.571.735,64
184	556.046,74	8.571.737,11
185	556.047,75	8.571.740,81
186	556.047,75	8.571.746,19
187	556.048,20	8.571.747,16
188	556.044,63	8.571.749,98
189	556.058,59	8.571.770,57
190	556.081,87	8.571.708,40
191	556.089,41	8.571.707,98
192	556.087,17	8.571.689,71
193	556.086,08	8.571.683,90
194	556.086,98	8.571.668,10
195	556.093,42	8.571.579,40
196	556.117,24	8.571.583,33
197	556.119,16	8.571.556,29
198	556.122,10	8.571.515,86
199	556.127,26	8.571.447,12
200	556.128,93	8.571.425,18
201	556.130,62	8.571.395,94
202	556.129,15	8.571.380,99
203	556.127,61	8.571.360,81

PONTO	X	Y
204	556.124,25	8.571.344,36
205	556.121,62	8.571.331,55
206	556.120,88	8.571.327,92
207	556.117,44	8.571.313,58
208	556.113,39	8.571.298,53
209	556.112,84	8.571.294,25
210	556.111,15	8.571.287,02
211	556.109,59	8.571.280,27
212	556.107,44	8.571.270,61
213	556.105,35	8.571.261,17
214	556.102,74	8.571.251,38
215	556.100,44	8.571.242,66
216	556.097,76	8.571.232,51
217	556.096,26	8.571.226,88
218	556.094,71	8.571.223,07
219	556.091,63	8.571.215,49
220	556.088,69	8.571.208,53
221	556.087,66	8.571.206,02
222	556.082,17	8.571.192,94
223	556.081,45	8.571.191,18
224	556.076,28	8.571.182,52
225	556.065,02	8.571.163,96
226	556.053,23	8.571.147,87
227	556.039,91	8.571.131,70
228	556.027,68	8.571.116,98
229	556.015,52	8.571.102,61
230	556.008,67	8.571.094,39
231	556.018,30	8.571.087,47
232	556.020,11	8.571.089,01
233	556.023,74	8.571.091,96
234	556.027,63	8.571.096,50
235	556.031,15	8.571.098,13
236	556.034,85	8.571.100,87
237	556.039,76	8.571.102,98
238	556.045,15	8.571.104,35
239	556.048,04	8.571.105,08
240	556.053,51	8.571.106,69
241	556.098,77	8.571.091,30
242	556.086,50	8.571.083,26
243	556.080,14	8.571.084,33
244	556.074,81	8.571.083,49
245	556.066,81	8.571.080,61
246	556.060,18	8.571.079,62
247	556.055,44	8.571.078,53
248	556.052,16	8.571.076,68
249	556.044,36	8.571.070,93
250	556.041,68	8.571.068,38
251	556.033,67	8.571.056,55
252	556.027,78	8.571.049,24
253	556.020,40	8.571.041,08
254	556.012,41	8.571.025,69
255	556.004,18	8.571.013,13
256	555.997,78	8.571.005,07
257	555.991,48	8.570.994,92
258	555.984,66	8.570.981,64
259	555.981,40	8.570.973,62
260	555.976,37	8.570.963,36
261	555.972,49	8.570.955,49
262	555.969,50	8.570.947,68
263	555.966,26	8.570.938,94

PONTO	X	Y
264	555.964,81	8.570.936,83
265	555.960,11	8.570.927,04
266	555.956,26	8.570.919,42
267	555.955,83	8.570.917,74
268	555.957,08	8.570.912,46
269	555.959,76	8.570.910,06
270	555.960,88	8.570.905,41
271	555.961,27	8.570.898,21
272	555.956,45	8.570.888,53
273	555.951,76	8.570.882,05
274	555.935,81	8.570.881,79
275	555.933,08	8.570.887,46
276	555.930,86	8.570.883,66
277	555.923,66	8.570.871,95
278	555.918,96	8.570.862,99
279	555.914,15	8.570.853,68
280	555.908,41	8.570.846,48
281	555.905,56	8.570.841,31
282	555.901,19	8.570.834,07
283	555.896,02	8.570.825,63
284	555.891,86	8.570.820,20
285	555.868,74	8.570.766,34
286	555.847,82	8.570.711,00
287	555.827,55	8.570.661,66
288	555.808,29	8.570.612,51
289	555.807,69	8.570.598,10
290	555.811,63	8.570.586,29
291	555.814,59	8.570.555,99
292	555.810,17	8.570.525,48
293	555.796,14	8.570.499,52
294	555.777,33	8.570.470,20
295	555.740,48	8.570.447,53
296	555.717,60	8.570.449,05
297	555.700,76	8.570.460,27
298	555.681,81	8.570.470,38
299	555.661,87	8.570.474,12
300	555.647,08	8.570.474,12
301	555.637,58	8.570.465,67
302	555.629,83	8.570.445,01
303	555.623,09	8.570.435,81
304	555.612,50	8.570.417,82
305	555.605,87	8.570.406,48
306	555.599,92	8.570.396,07
307	555.590,22	8.570.379,10
308	555.586,39	8.570.368,02
309	555.576,90	8.570.343,18
310	555.569,29	8.570.330,68
311	555.561,71	8.570.312,16
312	555.557,17	8.570.302,30
313	555.556,37	8.570.281,36
314	555.559,88	8.570.257,05
315	555.564,01	8.570.244,47
316	555.573,76	8.570.229,83
317	555.581,26	8.570.224,60
318	555.592,15	8.570.222,46
319	555.615,76	8.570.217,96
320	555.634,81	8.570.203,55
321	555.641,07	8.570.179,92
322	555.646,24	8.570.178,58
323	555.647,15	8.570.178,64

PONTO	X	Y
324	555.674,34	8.570.180,29
325	555.676,65	8.570.158,04
326	555.680,55	8.570.152,23
327	555.684,45	8.570.139,03
328	555.672,91	8.570.126,73
329	555.662,01	8.570.110,26
330	555.644,08	8.570.095,92
331	555.620,57	8.570.090,69
332	555.600,69	8.570.092,09
333	555.588,16	8.570.095,88
334	555.527,11	8.570.126,03
335	555.513,20	8.570.130,96
336	555.502,63	8.570.133,04
337	555.488,38	8.570.129,43
338	555.481,82	8.570.133,85
339	555.480,77	8.570.132,58
340	555.476,12	8.570.126,91
341	555.472,39	8.570.122,39
342	555.445,84	8.570.036,08
343	555.427,21	8.570.039,44
344	555.419,57	8.570.044,80
345	555.398,20	8.570.039,87
346	555.325,71	8.569.941,55
347	555.324,83	8.569.940,14
348	555.321,37	8.569.934,52
349	555.320,57	8.569.932,86
350	555.314,81	8.569.921,55
351	555.310,70	8.569.915,21
352	555.306,70	8.569.908,49
353	555.300,22	8.569.898,68
354	555.291,09	8.569.897,86
355	555.279,23	8.569.883,93
356	555.281,33	8.569.881,34
357	555.264,81	8.569.865,58
358	555.257,31	8.569.874,78
359	555.251,48	8.569.869,61
360	555.248,57	8.569.866,96
361	555.245,64	8.569.863,90
362	555.240,65	8.569.857,74
363	555.236,23	8.569.850,92
364	555.236,45	8.569.850,76
365	555.252,49	8.569.839,20
366	555.274,08	8.569.824,94
367	555.253,11	8.569.796,64
368	555.244,44	8.569.795,48
369	555.239,29	8.569.793,08
370	555.235,56	8.569.789,81
371	555.229,41	8.569.786,50
372	555.224,84	8.569.782,98
373	555.219,78	8.569.779,41
374	555.217,94	8.569.777,79
375	555.215,52	8.569.775,67
376	555.209,38	8.569.770,71
377	555.204,36	8.569.766,17
378	555.199,96	8.569.762,55
379	555.191,70	8.569.755,57
380	555.190,50	8.569.754,50
381	555.185,05	8.569.749,25
382	555.183,10	8.569.747,09
383	555.180,65	8.569.744,37

PONTO	X	Y
384	555.175,14	8.569.733,59
385	555.170,65	8.569.727,54
386	555.166,02	8.569.721,92
387	555.161,93	8.569.716,99
388	555.158,28	8.569.712,12
389	555.154,84	8.569.707,09
390	555.151,64	8.569.702,03
391	555.148,71	8.569.696,78
392	555.145,61	8.569.691,16
393	555.142,41	8.569.684,83
394	555.139,83	8.569.679,17
395	555.135,82	8.569.672,64
396	555.134,08	8.569.669,79
397	555.131,93	8.569.665,75
398	555.129,20	8.569.660,15
399	555.125,43	8.569.653,49
400	555.123,63	8.569.650,30
401	555.121,38	8.569.645,94
402	555.119,16	8.569.641,84
403	555.116,19	8.569.635,87
404	555.113,67	8.569.630,39
405	555.111,73	8.569.624,58
406	555.109,53	8.569.618,85
407	555.106,95	8.569.612,67
408	555.104,36	8.569.607,34
409	555.101,24	8.569.602,22
410	555.098,51	8.569.598,31
411	555.096,75	8.569.594,32
412	555.095,63	8.569.589,89
413	555.095,11	8.569.584,88
414	555.095,16	8.569.579,07
415	555.094,73	8.569.572,57
416	555.094,50	8.569.568,32
417	555.096,38	8.569.560,90
418	555.077,61	8.569.534,13
419	555.098,91	8.569.520,44
420	555.086,51	8.569.466,43
421	555.015,08	8.569.307,33
422	554.831,63	8.569.099,22
423	554.803,16	8.569.087,21
424	554.775,42	8.569.051,45
425	554.771,42	8.569.059,62
426	554.760,25	8.569.053,52
427	554.735,82	8.569.035,77
428	554.724,44	8.569.024,49
429	554.706,68	8.569.006,02
430	554.700,76	8.568.998,35
431	554.689,23	8.568.975,36
432	554.678,17	8.568.952,01
433	554.674,81	8.568.943,20
434	554.668,64	8.568.931,34
435	554.652,29	8.568.905,02
436	554.651,98	8.568.901,40
437	554.656,89	8.568.888,81
438	554.637,64	8.568.879,54
439	554.602,85	8.568.790,17
440	554.589,31	8.568.781,97
441	554.571,82	8.568.771,20
442	554.555,22	8.568.757,95
443	554.544,26	8.568.752,14

PONTO	X	Y
444	554.538,20	8.568.753,31
445	554.536,83	8.568.753,08
446	554.536,11	8.568.752,68
447	554.534,38	8.568.751,05
448	554.533,02	8.568.748,54
449	554.531,91	8.568.745,56
450	554.529,76	8.568.739,05
451	554.524,45	8.568.736,60
452	554.517,25	8.568.726,76
453	554.518,53	8.568.723,82
454	554.519,95	8.568.721,99
455	554.526,09	8.568.713,89
456	554.529,44	8.568.707,97
457	554.531,39	8.568.700,69
458	554.530,77	8.568.697,10
459	554.527,97	8.568.688,95
460	554.526,38	8.568.686,08
461	554.522,24	8.568.680,69
462	554.518,76	8.568.677,39
463	554.515,42	8.568.674,49
464	554.511,60	8.568.671,51
465	554.506,57	8.568.667,78
466	554.502,16	8.568.665,32
467	554.498,56	8.568.663,55
468	554.496,20	8.568.662,57
469	554.492,73	8.568.659,91
470	554.487,59	8.568.662,20
471	554.483,28	8.568.662,62
472	554.473,35	8.568.667,59
473	554.466,49	8.568.672,37
474	554.465,10	8.568.673,62
475	554.457,29	8.568.677,61
476	554.452,21	8.568.680,20
477	554.451,65	8.568.680,49
478	554.450,42	8.568.674,95
479	554.448,15	8.568.664,17
480	554.441,00	8.568.630,23
481	554.439,97	8.568.625,53
482	554.438,17	8.568.618,74
483	554.436,25	8.568.611,53
484	554.434,28	8.568.604,08
485	554.427,66	8.568.595,91
486	554.417,36	8.568.590,38
487	554.395,80	8.568.586,41
488	554.387,62	8.568.584,91
489	554.370,33	8.568.580,59
490	554.376,31	8.568.570,20
491	554.377,22	8.568.568,67
492	554.383,29	8.568.554,79
493	554.379,41	8.568.552,11
494	554.350,41	8.568.532,39
495	554.296,42	8.568.495,68
496	554.254,30	8.568.467,04
497	554.225,77	8.568.447,64
498	554.190,74	8.568.423,81
499	554.167,76	8.568.408,18
500	554.142,49	8.568.391,01
501	554.124,21	8.568.378,57
502	554.124,71	8.568.376,92
503	554.127,11	8.568.368,99

PONTO	X	Y
504	554.128,78	8.568.363,24
505	554.129,79	8.568.359,76
506	554.131,50	8.568.353,83
507	554.135,22	8.568.341,01
508	554.106,01	8.568.333,38
509	554.076,79	8.568.337,16
510	554.074,93	8.568.337,37
511	554.070,10	8.568.337,05
512	554.070,79	8.568.341,93
513	554.054,56	8.568.341,15
514	554.023,63	8.568.339,69
515	554.001,31	8.568.338,47
516	553.984,46	8.568.337,50
517	553.969,15	8.568.337,65
518	553.966,59	8.568.336,71
519	553.963,20	8.568.336,88
520	553.957,35	8.568.339,50
521	553.948,48	8.568.342,66
522	553.948,28	8.568.342,53
523	553.943,30	8.568.344,34
524	553.940,48	8.568.344,61
525	553.938,13	8.568.344,07
526	553.936,66	8.568.344,27
527	553.935,57	8.568.345,21
528	553.933,15	8.568.345,35
529	553.933,02	8.568.352,94
530	553.934,83	8.568.354,29
531	553.935,61	8.568.357,31
532	553.935,55	8.568.360,25
533	553.935,29	8.568.365,23
534	553.935,11	8.568.371,65
535	553.935,16	8.568.375,40
536	553.934,88	8.568.378,99
537	553.934,32	8.568.382,07
538	553.934,04	8.568.385,48
539	553.934,10	8.568.389,01
540	553.934,43	8.568.391,42
541	553.934,21	8.568.395,62
542	553.934,43	8.568.398,76
543	553.934,43	8.568.402,06
544	553.933,48	8.568.406,54
545	553.933,20	8.568.409,35
546	553.932,57	8.568.419,01
547	553.932,36	8.568.426,71
548	553.932,14	8.568.433,04
549	553.931,69	8.568.440,21
550	553.931,46	8.568.443,85
551	553.931,02	8.568.447,04
552	553.930,96	8.568.449,62
553	553.930,90	8.568.455,22
554	553.930,60	8.568.457,10
555	553.929,56	8.568.464,40
556	553.929,45	8.568.468,16
557	553.929,67	8.568.471,85
558	553.929,65	8.568.478,72
559	553.929,62	8.568.486,59
560	553.928,80	8.568.495,77
561	553.928,28	8.568.504,58
562	553.928,17	8.568.506,49
563	553.928,29	8.568.509,59

PONTO	X	Y
564	553.928,68	8.568.511,89
565	553.927,54	8.568.514,20
566	553.928,10	8.568.514,59
567	553.929,78	8.568.513,53
568	553.930,89	8.568.513,47
569	553.930,42	8.568.522,86
570	553.930,00	8.568.531,30
571	553.929,56	8.568.540,44
572	553.928,87	8.568.555,08
573	553.928,45	8.568.563,77
574	553.928,31	8.568.566,69
575	553.927,77	8.568.566,89
576	553.927,73	8.568.575,63
577	553.925,81	8.568.602,38
578	553.924,42	8.568.620,20
579	553.923,16	8.568.636,82
580	553.929,52	8.568.637,06
581	553.931,40	8.568.636,55
582	553.932,55	8.568.635,65
583	553.933,19	8.568.634,13
584	553.933,19	8.568.632,29
585	553.932,61	8.568.631,08
586	553.931,54	8.568.630,27
587	553.930,16	8.568.629,97
588	553.927,14	8.568.629,87
589	553.930,88	8.568.575,41
590	553.933,82	8.568.576,90
591	553.936,24	8.568.578,07
592	553.938,00	8.568.578,54
593	553.939,68	8.568.578,63
594	553.941,11	8.568.579,75
595	553.945,79	8.568.585,07
596	553.945,45	8.568.585,65
597	553.952,07	8.568.592,96
598	553.957,74	8.568.599,22
599	553.965,88	8.568.607,47
600	553.971,05	8.568.612,72
601	553.971,27	8.568.612,54
602	553.995,03	8.568.638,89
603	553.995,03	8.568.640,89
604	553.995,44	8.568.640,90
605	553.991,09	8.568.665,96
606	553.988,40	8.568.680,33
607	553.986,99	8.568.687,81
608	553.981,33	8.568.686,09
609	553.981,06	8.568.686,80
610	553.979,23	8.568.688,69
611	553.976,65	8.568.688,05
612	553.976,13	8.568.689,39
613	553.974,85	8.568.696,63
614	553.974,51	8.568.700,43
615	553.974,59	8.568.706,48
616	553.975,10	8.568.712,06
617	553.976,25	8.568.712,34
618	553.977,11	8.568.715,68
619	553.978,54	8.568.715,68
620	553.980,65	8.568.716,67
621	553.980,65	8.568.716,67
622	553.995,96	8.568.723,91
623	553.986,02	8.568.745,25

PONTO	X	Y
624	553.982,01	8.568.756,62
625	553.973,45	8.568.795,58
626	553.973,98	8.568.804,04
627	553.972,58	8.568.809,69
628	553.970,22	8.568.814,13
629	553.960,54	8.568.833,49
630	553.945,62	8.568.864,95
631	553.944,41	8.568.869,65
632	553.942,93	8.568.872,61
633	553.937,96	8.568.888,47
634	553.934,33	8.568.895,87
635	553.933,79	8.568.901,24
636	553.932,85	8.568.903,39
637	553.931,10	8.568.905,28
638	553.928,82	8.568.907,02
639	553.927,47	8.568.908,37
640	553.925,59	8.568.912,54
641	553.925,32	8.568.914,28
642	553.924,65	8.568.917,78
643	553.923,31	8.568.921,00
644	553.921,56	8.568.924,77
645	553.919,94	8.568.929,74
646	553.919,27	8.568.932,56
647	553.918,47	8.568.936,60
648	553.917,41	8.568.940,37
649	553.916,12	8.568.943,73
650	553.914,10	8.568.948,15
651	553.912,81	8.568.951,91
652	553.912,20	8.568.956,67
653	553.911,64	8.568.960,59
654	553.910,67	8.568.964,42
655	553.909,84	8.568.967,59
656	553.909,46	8.568.970,74
657	553.909,68	8.568.973,25
658	553.910,27	8.568.975,45
659	553.909,68	8.568.979,13
660	553.908,16	8.568.982,54
661	553.905,36	8.568.986,07
662	553.903,28	8.568.989,43
663	553.902,13	8.568.992,72
664	553.902,07	8.568.995,14
665	553.902,33	8.568.998,10
666	553.902,17	8.569.000,97
667	553.899,59	8.569.004,45
668	553.897,07	8.569.005,34
669	553.893,15	8.569.009,32
670	553.890,80	8.569.014,25
671	553.888,89	8.569.019,07
672	553.886,71	8.569.025,28
673	553.886,49	8.569.027,97
674	553.886,88	8.569.030,94
675	553.886,71	8.569.033,57
676	553.885,98	8.569.035,25
677	553.882,10	8.569.038,43
678	553.880,61	8.569.040,01
679	553.879,62	8.569.042,06
680	553.879,15	8.569.044,27
681	553.879,54	8.569.048,53
682	553.879,26	8.569.050,26
683	553.878,37	8.569.051,72

PONTO	X	Y
684	553.874,84	8.569.055,42
685	553.873,14	8.569.054,43
686	553.871,28	8.569.061,21
687	553.866,71	8.569.066,46
688	553.865,31	8.569.068,86
689	553.864,42	8.569.071,72
690	553.863,91	8.569.075,69
691	553.863,52	8.569.079,16
692	553.862,57	8.569.080,40
693	553.861,35	8.569.081,24
694	553.858,71	8.569.083,09
695	553.856,91	8.569.084,77
696	553.855,02	8.569.087,29
697	553.853,00	8.569.090,52
698	553.851,82	8.569.095,13
699	553.851,39	8.569.098,58
700	553.850,42	8.569.102,47
701	553.848,62	8.569.104,54
702	553.847,89	8.569.106,11
703	553.844,80	8.569.109,07
704	553.843,08	8.569.109,41
705	553.840,95	8.569.111,99
706	553.839,21	8.569.118,82
707	553.836,60	8.569.122,11
708	553.832,84	8.569.127,49
709	553.827,32	8.569.135,15
710	553.826,25	8.569.138,64
711	553.823,53	8.569.146,38
712	553.821,40	8.569.150,02
713	553.816,92	8.569.156,24
714	553.801,52	8.569.181,95
715	553.799,84	8.569.185,70
716	553.793,96	8.569.200,15
717	553.785,79	8.569.218,76
718	553.773,15	8.569.242,69
719	553.766,68	8.569.254,26
720	553.765,00	8.569.256,50
721	553.763,88	8.569.258,18
722	553.763,21	8.569.260,36
723	553.763,09	8.569.262,16
724	553.763,20	8.569.264,47
725	553.762,66	8.569.266,89
726	553.761,72	8.569.269,98
727	553.761,05	8.569.271,86
728	553.759,57	8.569.274,28
729	553.757,82	8.569.276,57
730	553.756,21	8.569.278,45
731	553.754,67	8.569.280,94
732	553.753,93	8.569.283,09
733	553.752,85	8.569.288,87
734	553.751,84	8.569.291,22
735	553.751,37	8.569.292,43
736	553.750,90	8.569.292,97
737	553.749,62	8.569.294,71
738	553.748,21	8.569.296,13
739	553.746,87	8.569.297,87
740	553.746,53	8.569.298,75
741	553.746,40	8.569.299,62
742	553.746,46	8.569.300,39
743	553.746,73	8.569.301,70

PONTO	X	Y
744	553.746,72	8.569.302,23
745	553.746,62	8.569.302,68
746	553.746,23	8.569.303,12
747	553.745,32	8.569.303,62
748	553.744,55	8.569.303,89
749	553.743,94	8.569.304,26
750	553.743,56	8.569.304,71
751	553.743,17	8.569.305,60
752	553.742,77	8.569.307,08
753	553.742,16	8.569.308,29
754	553.741,56	8.569.309,10
755	553.741,16	8.569.310,04
756	553.740,08	8.569.312,59
757	553.739,00	8.569.314,21
758	553.737,79	8.569.315,42
759	553.735,91	8.569.317,16
760	553.734,43	8.569.319,72
761	553.733,22	8.569.322,14
762	553.732,28	8.569.323,48
763	553.730,80	8.569.326,71
764	553.729,90	8.569.329,51
765	553.728,65	8.569.331,95
766	553.727,17	8.569.333,30
767	553.725,16	8.569.334,77
768	553.723,14	8.569.336,52
769	553.720,32	8.569.339,08
770	553.718,57	8.569.341,63
771	553.716,15	8.569.348,22
772	553.715,21	8.569.351,17
773	553.714,94	8.569.352,92
774	553.714,67	8.569.354,13
775	553.713,73	8.569.355,21
776	553.711,85	8.569.356,69
777	553.710,91	8.569.357,63
778	553.709,83	8.569.360,05
779	553.707,95	8.569.364,75
780	553.704,05	8.569.367,98
781	553.700,42	8.569.369,05
782	553.697,06	8.569.371,47
783	553.694,64	8.569.374,97
784	553.693,79	8.569.380,13
785	553.692,04	8.569.384,97
786	553.690,19	8.569.389,84
787	553.687,37	8.569.391,32
788	553.684,24	8.569.392,09
789	553.679,18	8.569.395,00
790	553.677,30	8.569.399,03
791	553.676,81	8.569.402,27
792	553.675,60	8.569.404,70
793	553.671,23	8.569.407,95
794	553.663,95	8.569.402,35
795	553.657,73	8.569.397,69
796	553.627,61	8.569.436,94
797	553.652,92	8.569.455,41
798	553.651,58	8.569.456,89
799	553.648,08	8.569.462,13
800	553.645,80	8.569.464,21
801	553.640,83	8.569.469,71
802	553.635,29	8.569.476,80
803	553.628,99	8.569.485,65

PONTO	X	Y
804	553.622,20	8.569.495,53
805	553.617,03	8.569.500,84
806	553.612,46	8.569.505,68
807	553.606,14	8.569.514,02
808	553.601,97	8.569.519,26
809	553.591,53	8.569.510,85
810	553.589,09	8.569.515,58
811	553.585,62	8.569.521,41
812	553.577,24	8.569.533,37
813	553.572,80	8.569.539,96
814	553.569,10	8.569.544,87
815	553.565,31	8.569.549,84
816	553.557,61	8.569.559,44
817	553.553,19	8.569.564,65
818	553.544,21	8.569.573,59
819	553.540,32	8.569.578,52
820	553.532,74	8.569.587,16
821	553.527,42	8.569.592,15
822	553.521,21	8.569.595,79
823	553.518,80	8.569.598,31
824	553.516,45	8.569.601,50
825	553.514,99	8.569.605,78
826	553.505,26	8.569.622,72
827	553.495,20	8.569.639,33
828	553.474,44	8.569.667,13
829	553.468,37	8.569.674,32
830	553.462,75	8.569.681,19
831	553.456,57	8.569.686,73
832	553.447,58	8.569.695,72
833	553.437,73	8.569.704,58
834	553.434,10	8.569.709,86
835	553.422,54	8.569.723,04
836	553.412,73	8.569.731,24
837	553.405,61	8.569.735,13
838	553.400,09	8.569.740,38
839	553.393,64	8.569.747,64
840	553.384,98	8.569.756,27
841	553.381,54	8.569.759,87
842	553.376,70	8.569.763,90
843	553.369,44	8.569.769,88
844	553.362,99	8.569.776,14
845	553.357,75	8.569.784,20
846	553.348,74	8.569.797,24
847	553.342,16	8.569.803,83
848	553.335,97	8.569.810,95
849	553.330,19	8.569.817,00
850	553.324,41	8.569.823,05
851	553.318,13	8.569.828,81
852	553.308,95	8.569.836,56
853	553.305,69	8.569.839,13
854	553.299,16	8.569.843,85
855	553.294,47	8.569.848,41
856	553.289,63	8.569.853,38
857	553.281,70	8.569.861,72
858	553.274,30	8.569.869,24
859	553.269,40	8.569.876,10
860	553.265,09	8.569.883,27
861	553.260,05	8.569.890,08
862	553.254,74	8.569.897,14
863	553.249,70	8.569.902,18

PONTO	X	Y
864	553.242,85	8.569.911,99
865	553.236,66	8.569.920,06
866	553.230,48	8.569.928,53
867	553.221,61	8.569.938,21
868	553.214,48	8.569.945,06
869	553.203,46	8.569.955,14
870	553.194,17	8.569.962,27
871	553.184,10	8.569.972,08
872	553.174,19	8.569.980,16
873	553.159,94	8.569.991,19
874	553.145,42	8.570.004,63
875	553.136,82	8.570.013,23
876	553.130,96	8.570.018,90
877	553.108,59	8.570.040,93
878	553.100,12	8.570.049,80
879	553.094,94	8.570.054,62
880	553.084,93	8.570.064,23
881	553.070,27	8.570.078,83
882	553.059,39	8.570.089,05
883	553.044,33	8.570.103,17
884	553.039,11	8.570.107,13
885	553.023,49	8.570.118,49
886	553.011,66	8.570.126,02
887	553.002,52	8.570.133,01
888	552.991,50	8.570.141,34
889	552.964,95	8.570.158,62
890	552.958,09	8.570.162,38
891	552.945,14	8.570.171,43
892	552.943,91	8.570.172,29
893	552.921,94	8.570.189,65
894	552.908,42	8.570.199,58
895	552.872,26	8.570.223,38
896	552.868,77	8.570.219,34
897	552.865,81	8.570.221,23
898	552.868,50	8.570.224,45
899	552.836,91	8.570.243,54
900	552.818,69	8.570.252,82
901	552.811,70	8.570.257,79
902	552.802,76	8.570.262,50
903	552.793,76	8.570.266,33
904	552.787,44	8.570.269,22
905	552.780,65	8.570.273,79
906	552.773,26	8.570.279,64
907	552.765,73	8.570.285,15
908	552.758,20	8.570.289,99
909	552.749,26	8.570.294,76
910	552.742,07	8.570.299,06
911	552.734,41	8.570.303,90
912	552.726,12	8.570.308,76
913	552.725,00	8.570.310,02
914	552.723,38	8.570.309,28
915	552.722,78	8.570.310,76
916	552.723,92	8.570.312,71
917	552.721,64	8.570.314,18
918	552.712,43	8.570.319,70
919	552.704,14	8.570.324,29
920	552.696,56	8.570.329,04
921	552.682,72	8.570.338,18
922	552.674,12	8.570.342,16
923	552.660,15	8.570.350,69

PONTO	X	Y
924	552.645,30	8.570.359,12
925	552.625,45	8.570.372,46
926	552.595,07	8.570.389,40
927	552.584,19	8.570.395,29
928	552.573,35	8.570.401,95
929	552.562,73	8.570.407,82
930	552.552,99	8.570.414,70
931	552.541,94	8.570.420,92
932	552.531,32	8.570.428,01
933	552.520,38	8.570.433,80
934	552.504,44	8.570.443,29
935	552.502,05	8.570.444,65
936	552.496,43	8.570.448,54
937	552.486,78	8.570.454,30
938	552.484,09	8.570.455,63
939	552.477,14	8.570.458,86
940	552.471,07	8.570.462,30
941	552.466,09	8.570.465,63
942	552.461,43	8.570.468,40
943	552.455,80	8.570.471,95
944	552.452,17	8.570.475,56
945	552.447,07	8.570.478,93
946	552.441,15	8.570.482,96
947	552.436,18	8.570.485,11
948	552.425,29	8.570.490,22
949	552.419,91	8.570.493,17
950	552.413,06	8.570.496,80
951	552.406,60	8.570.500,17
952	552.403,11	8.570.502,32
953	552.398,81	8.570.503,39
954	552.393,29	8.570.505,41
955	552.389,80	8.570.506,08
956	552.384,15	8.570.507,83
957	552.376,22	8.570.510,92
958	552.368,83	8.570.514,68
959	552.358,07	8.570.517,64
960	552.355,12	8.570.517,10
961	552.354,85	8.570.516,30
962	552.356,06	8.570.515,49
963	552.356,06	8.570.513,34
964	552.353,91	8.570.511,79
965	552.351,50	8.570.512,33
966	552.350,29	8.570.511,69
967	552.349,86	8.570.510,37
968	552.349,33	8.570.509,73
969	552.348,31	8.570.508,93
970	552.347,74	8.570.508,71
971	552.347,05	8.570.509,01
972	552.345,87	8.570.509,62
973	552.345,15	8.570.510,21
974	552.344,02	8.570.510,78
975	552.343,06	8.570.510,67
976	552.342,19	8.570.509,89
977	552.340,91	8.570.509,09
978	552.337,89	8.570.509,12
979	552.335,58	8.570.509,41
980	552.334,40	8.570.510,80
981	552.329,04	8.570.512,20
982	552.323,64	8.570.512,23
983	552.318,43	8.570.512,02

PONTO	X	Y
984	552.308,61	8.570.510,19
985	552.304,07	8.570.511,39
986	552.301,80	8.570.513,54
987	552.300,25	8.570.516,65
988	552.296,30	8.570.519,99
989	552.291,55	8.570.524,13
990	552.288,66	8.570.527,64
991	552.282,92	8.570.526,44
992	552.277,90	8.570.530,75
993	552.267,50	8.570.534,67
994	552.262,96	8.570.539,59
995	552.264,88	8.570.541,74
996	552.268,94	8.570.543,77
997	552.267,15	8.570.545,92
998	552.263,44	8.570.544,13
999	552.259,02	8.570.544,25
1000	552.257,59	8.570.545,20
1001	552.256,99	8.570.547,48
1002	552.255,32	8.570.551,66
1003	552.253,76	8.570.555,12
1004	552.252,93	8.570.563,49
1005	552.249,94	8.570.563,61
1006	552.246,47	8.570.563,01
1007	552.239,54	8.570.565,52
1008	552.238,71	8.570.569,70
1009	552.240,38	8.570.573,05
1010	552.245,40	8.570.573,29
1011	552.248,51	8.570.572,09
1012	552.251,97	8.570.572,81
1013	552.250,18	8.570.585,35
1014	552.248,34	8.570.602,21
1015	552.248,96	8.570.617,78
1016	552.251,14	8.570.632,23
1017	552.252,14	8.570.636,41
1018	552.255,80	8.570.646,45
1019	552.256,98	8.570.649,72
1020	552.256,58	8.570.655,70
1021	552.255,64	8.570.657,58
1022	552.254,56	8.570.659,19
1023	552.252,65	8.570.660,80
1024	552.250,47	8.570.662,31
1025	552.245,09	8.570.665,33
1026	552.244,42	8.570.665,00
1027	552.241,54	8.570.666,30
1028	552.235,78	8.570.668,89
1029	552.229,22	8.570.671,85
1030	552.219,14	8.570.676,40
1031	552.215,96	8.570.677,58
1032	552.206,34	8.570.681,15
1033	552.200,45	8.570.683,30
1034	552.193,21	8.570.685,91
1035	552.188,46	8.570.687,63
1036	552.178,38	8.570.688,30
1037	552.175,80	8.570.684,15
1038	552.172,61	8.570.680,68
1039	552.168,08	8.570.674,07
1040	552.166,11	8.570.670,65
1041	552.165,27	8.570.668,58
1042	552.163,31	8.570.667,07
1043	552.158,39	8.570.665,95

PONTO	X	Y
1044	552.154,15	8.570.666,06
1045	552.148,97	8.570.666,98
1046	552.131,99	8.570.675,28
1047	552.110,66	8.570.685,72
1048	552.112,10	8.570.701,83
1049	552.113,16	8.570.713,64
1050	552.114,14	8.570.718,82
1051	552.116,38	8.570.721,60
1052	552.117,72	8.570.722,35
1053	552.119,20	8.570.722,21
1054	552.120,80	8.570.721,57
1055	552.122,62	8.570.719,58
1056	552.124,15	8.570.718,50
1057	552.126,04	8.570.717,62
1058	552.128,70	8.570.717,17
1059	552.134,86	8.570.714,78
1060	552.162,87	8.570.717,78
1061	552.169,73	8.570.719,35
1062	552.175,75	8.570.743,05
1063	552.175,69	8.570.744,93
1064	552.175,30	8.570.746,69
1065	552.174,80	8.570.747,73
1066	552.153,71	8.570.780,29
1067	552.149,73	8.570.781,17
1068	552.151,20	8.570.788,15
1069	552.158,13	8.570.786,69
1070	552.157,35	8.570.782,45
1071	552.178,09	8.570.750,22
1072	552.179,28	8.570.748,15
1073	552.179,64	8.570.747,22
1074	552.179,91	8.570.746,00
1075	552.179,98	8.570.743,86
1076	552.198,02	8.570.737,36
1077	552.196,16	8.570.730,50
1078	552.273,60	8.570.704,29
1079	552.281,15	8.570.701,73
1080	552.281,47	8.570.701,40
1081	552.281,54	8.570.701,12
1082	552.281,55	8.570.700,77
1083	552.281,50	8.570.700,49
1084	552.279,93	8.570.696,60
1085	552.283,89	8.570.695,21
1086	552.287,51	8.570.700,21
1087	552.301,48	8.570.719,54
1088	552.300,19	8.570.720,57
1089	552.299,60	8.570.721,19
1090	552.299,34	8.570.721,75
1091	552.299,31	8.570.722,35
1092	552.299,46	8.570.722,90
1093	552.310,66	8.570.737,53
1094	552.311,08	8.570.737,66
1095	552.311,75	8.570.737,67
1096	552.312,28	8.570.737,45
1097	552.313,48	8.570.736,56
1098	552.314,01	8.570.736,43
1099	552.314,59	8.570.736,40
1100	552.315,22	8.570.736,55
1101	552.315,59	8.570.736,85
1102	552.324,00	8.570.748,10
1103	552.345,47	8.570.776,86

PONTO	X	Y
1104	552.356,70	8.570.791,92
1105	552.363,56	8.570.801,11
1106	552.371,17	8.570.811,30
1107	552.381,91	8.570.825,68
1108	552.393,00	8.570.839,96
1109	552.394,41	8.570.840,97
1110	552.409,53	8.570.825,77
1111	552.425,62	8.570.809,58
1112	552.446,48	8.570.789,74
1113	552.451,92	8.570.784,99
1114	552.453,60	8.570.784,65
1115	552.455,86	8.570.784,78
1116	552.457,91	8.570.785,30
1117	552.459,96	8.570.786,14
1118	552.461,50	8.570.786,52
1119	552.462,01	8.570.786,64
1120	552.465,78	8.570.785,69
1121	552.468,50	8.570.782,02
1122	552.464,44	8.570.778,49
1123	552.465,99	8.570.775,39
1124	552.468,22	8.570.770,87
1125	552.470,46	8.570.767,51
1126	552.473,77	8.570.764,60
1127	552.477,95	8.570.765,11
1128	552.483,90	8.570.766,06
1129	552.487,87	8.570.766,50
1130	552.492,42	8.570.765,27
1131	552.494,15	8.570.762,30
1132	552.499,16	8.570.761,21
1133	552.547,93	8.570.762,05
1134	552.559,17	8.570.762,21
1135	552.567,17	8.570.763,35
1136	552.577,46	8.570.766,50
1137	552.586,75	8.570.771,93
1138	552.604,66	8.570.789,44
1139	552.645,51	8.570.831,94
1140	552.653,24	8.570.848,83
1141	552.656,21	8.570.855,55
1142	552.660,75	8.570.859,30
1143	552.662,65	8.570.861,96
1144	552.663,21	8.570.864,29
1145	552.660,55	8.570.868,12
1146	552.662,15	8.570.877,62
1147	552.672,16	8.570.883,09
1148	552.678,82	8.570.918,27
1149	552.696,95	8.571.013,97
1150	552.695,70	8.571.014,33
1151	552.696,10	8.571.017,11
1152	552.695,49	8.571.019,58
1153	552.697,31	8.571.027,92
1154	552.698,35	8.571.027,78
1155	552.722,56	8.571.154,58
1156	552.726,41	8.571.186,18
1157	552.733,48	8.571.218,98
1158	552.729,10	8.571.219,83
1159	552.723,98	8.571.220,83
1160	552.727,42	8.571.239,00
1161	552.712,98	8.571.242,67
1162	552.719,97	8.571.275,84
1163	552.723,32	8.571.291,72

PONTO	X	Y
1164	552.730,50	8.571.322,88
1165	552.735,34	8.571.332,05
1166	552.749,20	8.571.344,14
1167	552.886,68	8.571.459,48
1168	552.924,67	8.571.492,18
1169	552.934,12	8.571.500,32
1170	552.940,50	8.571.505,38
1171	552.945,92	8.571.509,05
1172	552.951,35	8.571.511,61
1173	552.958,31	8.571.514,10
1174	552.970,93	8.571.515,72
1175	552.977,89	8.571.515,57
1176	552.985,74	8.571.514,69
1177	552.993,00	8.571.512,86
1178	553.000,84	8.571.509,78
1179	553.007,59	8.571.506,63
1180	553.022,03	8.571.499,22
1181	553.051,78	8.571.483,97
1182	553.097,11	8.571.461,02
1183	553.110,66	8.571.454,92
1184	553.110,01	8.571.453,82
1185	553.109,29	8.571.453,15
1186	553.109,85	8.571.452,43
1187	553.111,52	8.571.451,72
1188	553.112,34	8.571.451,38
1189	553.116,57	8.571.451,22
1190	553.117,90	8.571.451,33
1191	553.119,28	8.571.452,25
1192	553.142,90	8.571.445,77
1193	553.150,25	8.571.443,09
1194	553.172,12	8.571.441,92
1195	553.175,25	8.571.442,91
1196	553.178,25	8.571.444,61
1197	553.182,91	8.571.448,78
1198	553.185,83	8.571.452,14
1199	553.187,80	8.571.453,53
1200	553.192,75	8.571.455,34
1201	553.286,20	8.571.452,45
1202	553.290,48	8.571.442,41
1203	553.291,31	8.571.442,62
1204	553.293,96	8.571.436,10
1205	553.298,68	8.571.434,42
1206	553.304,33	8.571.422,23
1207	553.307,91	8.571.421,78
1208	553.312,18	8.571.422,19
1209	553.339,53	8.571.430,12
1210	553.351,11	8.571.434,95
1211	553.359,17	8.571.438,18
1212	553.370,73	8.571.441,94
1213	553.394,48	8.571.446,51
1214	553.400,70	8.571.447,67
1215	553.446,62	8.571.462,67
1216	553.455,85	8.571.466,44
1217	553.460,47	8.571.467,99
1218	553.467,19	8.571.470,18
1219	553.470,17	8.571.470,93
1220	553.469,46	8.571.472,11
1221	553.471,05	8.571.472,91
1222	553.471,90	8.571.471,52
1223	553.477,06	8.571.473,79

PONTO	X	Y
1224	553.480,17	8.571.474,54
1225	553.483,64	8.571.473,95
1226	553.489,49	8.571.473,21
1227	553.494,92	8.571.472,07
1228	553.509,85	8.571.466,82
1229	553.512,69	8.571.467,28
1230	553.514,90	8.571.467,02
1231	553.516,71	8.571.465,95
1232	553.517,81	8.571.464,25
1233	553.528,73	8.571.460,30
1234	553.533,27	8.571.459,38
1235	553.537,95	8.571.459,76
1236	553.539,56	8.571.460,77
1237	553.541,71	8.571.463,33
1238	553.544,60	8.571.476,74
1239	553.554,59	8.571.475,46
1240	553.554,56	8.571.474,86
1241	553.561,31	8.571.473,07
1242	553.569,64	8.571.473,15
1243	553.576,05	8.571.474,07
1244	553.579,01	8.571.477,50
1245	553.580,04	8.571.477,48
1246	553.580,09	8.571.485,67
1247	553.585,28	8.571.485,86
1248	553.585,24	8.571.492,44
1249	553.592,07	8.571.492,53
1250	553.592,34	8.571.483,64
1251	553.607,32	8.571.483,52
1252	553.606,52	8.571.472,62
1253	553.608,80	8.571.470,01
1254	553.638,85	8.571.469,23
1255	553.637,96	8.571.439,63
1256	553.676,31	8.571.437,51
1257	553.688,95	8.571.437,15
1258	553.692,95	8.571.437,48
1259	553.701,15	8.571.439,90
1260	553.704,63	8.571.441,50
1261	553.705,93	8.571.443,96
1262	553.709,74	8.571.444,50
1263	553.711,62	8.571.443,15
1264	553.723,11	8.571.447,12
1265	553.735,01	8.571.452,54
1266	553.738,98	8.571.454,56
1267	553.753,46	8.571.463,53
1268	553.787,98	8.571.485,63
1269	553.832,01	8.571.518,83
1270	553.847,20	8.571.530,84
1271	553.869,80	8.571.555,52
1272	553.886,32	8.571.572,38
1273	553.897,30	8.571.583,28
1274	553.904,87	8.571.590,80
1275	553.915,42	8.571.602,90
1276	553.913,67	8.571.604,68
1277	553.904,94	8.571.613,58
1278	553.899,16	8.571.608,34
1279	553.893,58	8.571.613,92
1280	553.902,32	8.571.622,05
1281	553.918,25	8.571.605,79
1282	553.934,25	8.571.624,50
1283	553.941,30	8.571.632,74

PONTO	X	Y
1284	553.956,63	8.571.653,44
1285	553.968,15	8.571.669,00
1286	553.977,33	8.571.681,40
1287	553.993,62	8.571.700,60
1288	554.048,19	8.571.763,74
1289	554.086,62	8.571.804,67
1290	554.097,17	8.571.816,74
1291	554.110,57	8.571.832,06
1292	554.115,58	8.571.837,78
1293	554.127,14	8.571.851,00
1294	554.142,00	8.571.867,99
1295	554.166,73	8.571.902,14
1296	554.186,90	8.571.930,23
1297	554.207,27	8.571.960,54
1298	554.244,17	8.572.014,45
1299	554.258,48	8.572.037,30
1300	554.265,74	8.572.044,76
1301	554.289,34	8.572.079,38
1302	554.310,95	8.572.117,08
1303	554.305,13	8.572.122,70
1304	554.308,66	8.572.126,16
1305	554.314,17	8.572.120,98
1306	554.322,37	8.572.130,56
1307	554.341,63	8.572.158,49
1308	554.359,44	8.572.190,21
1309	554.371,34	8.572.217,84
1310	554.377,25	8.572.226,10
1311	554.391,97	8.572.256,56
1312	554.403,40	8.572.280,48
1313	554.408,31	8.572.285,72
1314	554.411,21	8.572.290,42
1315	554.413,40	8.572.298,40
1316	554.418,69	8.572.309,66
1317	554.419,73	8.572.313,01
1318	554.432,13	8.572.347,30
1319	554.424,19	8.572.351,92
1320	554.438,41	8.572.386,23
1321	554.437,07	8.572.386,77
1322	554.440,28	8.572.394,45
1323	554.440,86	8.572.394,23
1324	554.457,59	8.572.432,83
1325	554.448,47	8.572.434,94
1326	554.444,82	8.572.435,79
1327	554.445,18	8.572.437,05
1328	554.457,74	8.572.434,13
1329	554.457,84	8.572.434,59
1330	554.458,51	8.572.434,59
1331	554.460,05	8.572.433,90
1332	554.468,24	8.572.431,95
1333	554.469,50	8.572.432,20
1334	554.469,84	8.572.435,43
1335	554.471,22	8.572.436,65
1336	554.472,36	8.572.438,70
1337	554.472,16	8.572.441,46
1338	554.473,44	8.572.443,41
1339	554.473,17	8.572.447,44
1340	554.473,97	8.572.449,46
1341	554.475,38	8.572.450,47
1342	554.475,67	8.572.451,56
1343	554.475,65	8.572.452,82

PONTO	X	Y
1344	554.475,25	8.572.454,21
1345	554.475,12	8.572.455,71
1346	554.475,84	8.572.461,77
1347	554.477,80	8.572.471,71
1348	554.479,01	8.572.474,93
1349	554.479,62	8.572.482,52
1350	554.480,36	8.572.485,15
1351	554.481,37	8.572.486,49
1352	554.481,57	8.572.488,31
1353	554.481,43	8.572.490,12
1354	554.482,04	8.572.493,35
1355	554.482,51	8.572.500,74
1356	554.483,25	8.572.502,35
1357	554.484,66	8.572.517,95
1358	554.485,53	8.572.521,65
1359	554.485,94	8.572.526,08
1360	554.486,00	8.572.527,69
1361	554.485,80	8.572.532,06
1362	554.486,00	8.572.537,31
1363	554.488,29	8.572.548,13
1364	554.488,83	8.572.554,24
1365	554.488,89	8.572.560,29
1366	554.488,72	8.572.563,24
1367	554.488,56	8.572.566,01
1368	554.488,83	8.572.569,03
1369	554.488,96	8.572.570,91
1370	554.489,59	8.572.573,63
1371	554.490,22	8.572.576,46
1372	554.490,84	8.572.579,31
1373	554.491,11	8.572.581,44
1374	554.491,49	8.572.584,41
1375	554.491,58	8.572.585,16
1376	554.491,55	8.572.587,70
1377	554.491,49	8.572.590,86
1378	554.491,45	8.572.592,42
1379	554.491,14	8.572.593,93
1380	554.490,91	8.572.595,04
1381	554.490,91	8.572.597,33
1382	554.490,44	8.572.599,48
1383	554.490,10	8.572.602,03
1384	554.489,63	8.572.603,58
1385	554.488,49	8.572.605,66
1386	554.488,09	8.572.607,01
1387	554.488,22	8.572.608,62
1388	554.488,09	8.572.609,76
1389	554.487,15	8.572.610,57
1390	554.486,74	8.572.611,58
1391	554.486,87	8.572.615,31
1392	554.486,95	8.572.617,16
1393	554.486,71	8.572.618,43
1394	554.486,64	8.572.620,11
1395	554.487,25	8.572.621,09
1396	554.488,93	8.572.622,10
1397	554.489,10	8.572.623,41
1398	554.488,63	8.572.626,03
1399	554.488,31	8.572.628,45
1400	554.488,22	8.572.629,25
1401	554.488,89	8.572.631,47
1402	554.488,89	8.572.633,96
1403	554.489,50	8.572.635,30

PONTO	X	Y
1404	554.488,96	8.572.636,65
1405	554.489,20	8.572.639,84
1406	554.489,72	8.572.646,64
1407	554.489,90	8.572.649,02
1408	554.490,58	8.572.653,76
1409	554.491,09	8.572.657,35
1410	554.491,82	8.572.662,46
1411	554.492,32	8.572.666,14
1412	554.493,13	8.572.672,47
1413	554.493,49	8.572.675,70
1414	554.494,07	8.572.680,81
1415	554.494,00	8.572.687,40
1416	554.494,14	8.572.693,18
1417	554.494,54	8.572.694,52
1418	554.494,43	8.572.699,20
1419	554.494,44	8.572.701,08
1420	554.494,54	8.572.704,53
1421	554.495,28	8.572.710,05
1422	554.495,68	8.572.715,96
1423	554.495,82	8.572.726,24
1424	554.495,35	8.572.731,96
1425	554.495,62	8.572.735,99
1426	554.495,15	8.572.739,75
1427	554.495,55	8.572.742,24
1428	554.494,81	8.572.748,43
1429	554.494,74	8.572.754,00
1430	554.494,74	8.572.760,26
1431	554.495,28	8.572.768,19
1432	554.495,95	8.572.775,04
1433	554.496,09	8.572.778,67
1434	554.498,10	8.572.785,93
1435	554.498,78	8.572.789,29
1436	554.500,25	8.572.792,79
1437	554.500,72	8.572.796,75
1438	554.502,67	8.572.802,53
1439	554.504,56	8.572.806,23
1440	554.505,50	8.572.807,78
1441	554.507,31	8.572.811,14
1442	554.508,05	8.572.811,47
1443	554.509,26	8.572.812,82
1444	554.510,07	8.572.814,83
1445	554.510,47	8.572.815,37
1446	554.512,35	8.572.816,71
1447	554.514,10	8.572.818,73
1448	554.515,31	8.572.819,94
1449	554.518,13	8.572.821,02
1450	554.519,75	8.572.821,82
1451	554.521,90	8.572.823,44
1452	554.523,51	8.572.824,38
1453	554.527,74	8.572.825,12
1454	554.530,16	8.572.824,71
1455	554.532,11	8.572.825,18
1456	554.533,46	8.572.825,99
1457	554.534,80	8.572.825,99
1458	554.539,37	8.572.824,92
1459	554.541,12	8.572.824,78
1460	554.543,14	8.572.824,51
1461	554.545,83	8.572.823,84
1462	554.548,51	8.572.822,90
1463	554.549,99	8.572.822,23

PONTO	X	Y
1464	554.552,28	8.572.821,42
1465	554.556,77	8.572.819,90
1466	554.558,90	8.572.818,98
1467	554.560,21	8.572.818,33
1468	554.562,36	8.572.816,85
1469	554.563,67	8.572.815,67
1470	554.565,01	8.572.814,33
1471	554.567,00	8.572.812,21
1472	554.567,58	8.572.811,37
1473	554.568,21	8.572.810,46
1474	554.571,03	8.572.808,72
1475	554.573,05	8.572.808,51
1476	554.578,93	8.572.813,46
1477	554.580,69	8.572.814,83
1478	554.586,42	8.572.818,89
1479	554.594,34	8.572.822,03
1480	554.596,64	8.572.822,75
1481	554.611,80	8.572.826,35
1482	554.623,82	8.572.829,20
1483	554.627,20	8.572.832,48
1484	554.634,34	8.572.834,29
1485	554.635,15	8.572.831,57
1486	554.659,44	8.572.837,63
1487	554.659,32	8.572.839,98
1488	554.660,45	8.572.840,82
1489	554.661,79	8.572.841,03
1490	554.662,59	8.572.842,04
1491	554.662,80	8.572.843,00
1492	554.666,12	8.572.844,60
1493	554.667,21	8.572.846,11
1494	554.669,15	8.572.846,91
1495	554.671,96	8.572.846,15
1496	554.673,56	8.572.844,22
1497	554.678,77	8.572.841,20
1498	554.695,32	8.572.827,75
1499	554.698,13	8.572.825,90
1500	554.700,44	8.572.827,12
1501	554.702,63	8.572.826,87
1502	554.704,39	8.572.825,44
1503	554.705,19	8.572.823,55
1504	554.705,11	8.572.821,79
1505	554.705,48	8.572.820,82
1506	554.709,73	8.572.821,12
1507	554.711,15	8.572.820,78
1508	554.719,98	8.572.812,88
1509	554.726,83	8.572.817,59
1510	554.735,92	8.572.821,94
1511	554.739,87	8.572.823,23
1512	554.746,06	8.572.824,04
1513	554.750,75	8.572.824,16
1514	554.770,09	8.572.832,67
1515	554.770,42	8.572.832,07
1516	554.775,06	8.572.834,70
1517	554.775,04	8.572.835,07
1518	554.782,46	8.572.838,06
1519	554.785,58	8.572.832,25
1520	554.799,72	8.572.838,70
1521	554.802,86	8.572.838,21
1522	554.805,51	8.572.832,84
1523	554.806,26	8.572.833,05

PONTO	X	Y
1524	554.814,00	8.572.817,06
1525	554.816,19	8.572.818,03
1526	554.816,61	8.572.817,38
1527	554.822,26	8.572.820,34
1528	554.827,47	8.572.809,27
1529	554.834,64	8.572.812,61
1530	554.837,65	8.572.807,14
1531	554.830,17	8.572.799,01
1532	554.813,16	8.572.788,77
1533	554.803,08	8.572.784,48
1534	554.804,86	8.572.780,44
1535	554.804,80	8.572.780,41
1536	554.805,35	8.572.779,14
1537	554.808,62	8.572.767,81
1538	554.808,02	8.572.760,52
1539	554.807,06	8.572.756,70
1540	554.804,97	8.572.753,19
1541	554.801,39	8.572.751,76
1542	554.795,68	8.572.751,76
1543	554.795,26	8.572.741,37
1544	554.793,24	8.572.732,23
1545	554.793,20	8.572.728,02
1546	554.794,09	8.572.720,76
1547	554.795,47	8.572.713,15
1548	554.797,50	8.572.706,06
1549	554.802,06	8.572.688,35
1550	554.805,22	8.572.677,15
1551	554.810,51	8.572.665,89
1552	554.840,36	8.572.686,98
1553	554.874,17	8.572.710,85
1554	554.875,92	8.572.712,67
1555	554.877,49	8.572.715,90
1556	554.877,79	8.572.719,94
1557	554.877,22	8.572.722,19
1558	554.862,53	8.572.749,84
1559	554.861,92	8.572.752,62
1560	554.862,51	8.572.753,67
1561	554.863,47	8.572.754,45
1562	554.864,75	8.572.754,73
1563	554.866,05	8.572.754,53
1564	554.867,00	8.572.753,89
1565	554.867,61	8.572.753,07
1566	554.887,54	8.572.715,69
1567	554.887,72	8.572.714,58
1568	554.886,40	8.572.712,20
1569	554.815,69	8.572.662,12
1570	554.821,40	8.572.653,86
1571	554.818,88	8.572.651,98
1572	554.815,42	8.572.649,42
1573	554.815,59	8.572.644,07
1574	554.822,69	8.572.641,34
1575	554.823,70	8.572.638,48
1576	554.824,04	8.572.627,94
1577	554.827,44	8.572.626,68
1578	554.829,97	8.572.624,48
1579	554.831,89	8.572.621,72
1580	554.832,61	8.572.618,78
1581	554.833,66	8.572.618,70
1582	554.833,17	8.572.589,56
1583	554.837,54	8.572.589,67

PONTO	X	Y
1584	554.850,04	8.572.589,98
1585	554.850,14	8.572.587,38
1586	554.806,35	8.572.586,30
1587	554.805,79	8.572.573,32
1588	554.805,49	8.572.566,37
1589	554.806,37	8.572.560,23
1590	554.807,51	8.572.557,26
1591	554.812,09	8.572.551,59
1592	554.820,13	8.572.543,18
1593	554.837,89	8.572.526,91
1594	554.843,53	8.572.522,92
1595	554.849,63	8.572.534,70
1596	554.851,08	8.572.537,51
1597	554.863,98	8.572.530,79
1598	554.860,96	8.572.524,40
1599	554.862,44	8.572.523,73
1600	554.858,25	8.572.515,48
1601	554.876,49	8.572.506,20
1602	554.895,89	8.572.500,78
1603	554.928,59	8.572.498,12
1604	554.962,95	8.572.496,86
1605	554.995,92	8.572.495,70
1606	555.030,61	8.572.493,68
1607	555.031,41	8.572.498,93
1608	555.036,79	8.572.498,66
1609	555.036,79	8.572.493,82
1610	555.065,22	8.572.492,68
1611	555.072,33	8.572.492,14
1612	555.077,95	8.572.490,83
1613	555.083,76	8.572.488,64
1614	555.091,86	8.572.484,69
1615	555.097,08	8.572.481,25
1616	555.103,25	8.572.477,17
1617	555.107,87	8.572.472,59
1618	555.110,69	8.572.467,95
1619	555.113,10	8.572.463,14
1620	555.116,31	8.572.464,23
1621	555.116,46	8.572.463,79
1622	555.118,41	8.572.464,46
1623	555.145,93	8.572.474,01
1624	555.142,85	8.572.483,33
1625	555.158,65	8.572.488,04
1626	555.165,10	8.572.467,47
1627	555.149,84	8.572.462,36
1628	555.146,55	8.572.471,94
1629	555.119,70	8.572.462,79
1630	555.117,15	8.572.461,92
1631	555.117,66	8.572.460,45
1632	555.115,43	8.572.459,81
1633	555.117,50	8.572.454,50
1634	555.125,87	8.572.425,11
1635	555.128,00	8.572.417,76
1636	555.128,67	8.572.409,36
1637	555.128,17	8.572.403,01
1638	555.127,16	8.572.396,50
1639	555.120,79	8.572.380,37
1640	555.115,55	8.572.368,86
1641	555.116,41	8.572.368,48
1642	555.115,42	8.572.366,28
1643	555.117,69	8.572.364,95

PONTO	X	Y
1644	555.119,73	8.572.368,40
1645	555.122,65	8.572.370,39
1646	555.124,47	8.572.370,75
1647	555.127,92	8.572.370,20
1648	555.129,23	8.572.369,48
1649	555.131,72	8.572.366,69
1650	555.132,29	8.572.364,91
1651	555.132,12	8.572.361,00
1652	555.130,20	8.572.357,49
1653	555.127,18	8.572.351,95
1654	555.124,64	8.572.347,29
1655	555.125,35	8.572.343,75
1656	555.130,02	8.572.341,18
1657	555.145,30	8.572.332,78
1658	555.164,29	8.572.338,08
1659	555.165,38	8.572.334,21
1660	555.152,69	8.572.330,68
1661	555.148,93	8.572.323,75
1662	555.152,27	8.572.311,02
1663	555.148,26	8.572.309,87
1664	555.143,20	8.572.329,00
1665	555.128,56	8.572.337,11
1666	555.123,33	8.572.340,01
1667	555.119,88	8.572.338,83
1668	555.110,85	8.572.322,64
1669	555.094,51	8.572.332,05
1670	555.061,19	8.572.274,70
1671	555.056,44	8.572.267,32
1672	554.960,08	8.572.166,51
1673	554.957,73	8.572.160,38
1674	554.952,44	8.572.150,32
1675	554.950,93	8.572.147,44
1676	554.948,91	8.572.144,50
1677	554.939,56	8.572.135,20
1678	554.923,42	8.572.101,21
1679	554.894,87	8.572.081,85
1680	554.879,63	8.572.066,60
1681	554.874,79	8.572.059,95
1682	554.919,93	8.572.023,03
1683	554.919,04	8.572.019,25
1684	554.916,28	8.572.010,02
1685	554.916,23	8.572.009,61
1686	554.915,85	8.572.006,10
1687	554.916,16	8.572.003,26
1688	554.917,06	8.572.000,63
1689	554.919,30	8.571.997,17
1690	554.920,83	8.571.991,67
1691	554.920,36	8.571.985,84
1692	554.918,38	8.571.981,08
1693	554.916,40	8.571.977,81
1694	554.915,74	8.571.975,87
1695	554.915,66	8.571.972,86
1696	554.916,66	8.571.967,05
1697	554.918,93	8.571.961,45
1698	554.919,29	8.571.954,66
1699	554.919,71	8.571.948,64
1700	554.919,91	8.571.942,96
1701	554.920,44	8.571.940,15
1702	554.926,23	8.571.929,31
1703	554.931,59	8.571.921,14

PONTO	X	Y
1704	554.935,41	8.571.908,81
1705	554.938,54	8.571.900,93
1706	554.940,08	8.571.895,87
1707	554.934,43	8.571.844,37
1708	554.933,42	8.571.797,23
1709	554.919,25	8.571.751,64
1710	554.900,03	8.571.706,13
1711	554.877,28	8.571.676,88
1712	554.841,29	8.571.675,88
1713	554.829,92	8.571.663,64
1714	554.818,13	8.571.649,99
1715	554.814,26	8.571.649,78
1716	554.805,80	8.571.650,72
1717	554.802,17	8.571.651,13
1718	554.796,63	8.571.650,94
1719	554.790,60	8.571.650,62
1720	554.784,76	8.571.650,31
1721	554.781,34	8.571.649,94
1722	554.773,86	8.571.647,73
1723	554.770,23	8.571.646,84
1724	554.764,45	8.571.644,12
1725	554.760,42	8.571.642,99
1726	554.746,57	8.571.637,31
1727	554.744,51	8.571.641,52
1728	554.743,37	8.571.640,98
1729	554.732,50	8.571.633,80
1730	554.725,85	8.571.644,00
1731	554.723,35	8.571.647,44
1732	554.720,10	8.571.650,66
1733	554.717,24	8.571.654,65
1734	554.717,05	8.571.654,67
1735	554.716,94	8.571.654,62
1736	554.716,63	8.571.653,45
1737	554.716,82	8.571.647,72
1738	554.715,44	8.571.639,84
1739	554.706,59	8.571.636,59
1740	554.701,61	8.571.639,26
1741	554.692,96	8.571.639,09
1742	554.686,10	8.571.638,72
1743	554.686,09	8.571.638,72
1744	554.686,28	8.571.638,28
1745	554.693,46	8.571.617,08
1746	554.698,80	8.571.591,94
1747	554.692,19	8.571.575,00
1748	554.670,47	8.571.563,50
1749	554.644,55	8.571.556,22
1750	554.628,50	8.571.551,66
1751	554.634,22	8.571.541,97
1752	554.644,77	8.571.533,27
1753	554.651,70	8.571.526,26
1754	554.657,55	8.571.514,76
1755	554.666,05	8.571.501,86
1756	554.668,30	8.571.503,19
1757	554.706,78	8.571.451,05
1758	554.715,47	8.571.434,11
1759	554.715,62	8.571.421,79
1760	554.703,15	8.571.376,04
1761	554.688,67	8.571.332,71
1762	554.676,80	8.571.322,81
1763	554.647,61	8.571.314,01

PONTO	X	Y
1764	554.623,71	8.571.306,53
1765	554.612,27	8.571.301,03
1766	554.609,63	8.571.297,66
1767	554.606,09	8.571.285,32
1768	554.601,49	8.571.269,36
1769	554.593,06	8.571.282,52
1770	554.591,78	8.571.282,52
1771	554.587,55	8.571.275,49
1772	554.585,85	8.571.276,25
1773	554.582,65	8.571.263,19
1774	554.581,94	8.571.263,01
1775	554.585,53	8.571.261,71
1776	554.588,80	8.571.259,72
1777	554.591,19	8.571.255,97
1778	554.592,91	8.571.250,79
1779	554.592,58	8.571.246,27
1780	554.591,80	8.571.243,15
1781	554.590,54	8.571.241,12
1782	554.589,47	8.571.238,99
1783	554.592,54	8.571.237,18
1784	554.591,56	8.571.231,78
1785	554.590,47	8.571.229,61
1786	554.590,96	8.571.227,14
1787	554.591,07	8.571.225,30
1788	554.592,00	8.571.223,32
1789	554.592,71	8.571.220,39
1790	554.592,95	8.571.217,79
1791	554.610,88	8.571.206,51
1792	554.602,98	8.571.201,80
1793	554.603,10	8.571.198,48
1794	554.600,92	8.571.194,63
1795	554.600,74	8.571.194,48
1796	554.600,43	8.571.192,65
1797	554.599,74	8.571.190,47
1798	554.597,62	8.571.186,66
1799	554.594,89	8.571.184,30
1800	554.593,13	8.571.183,42
1801	554.593,10	8.571.182,98
1802	554.593,10	8.571.182,93
1803	554.593,66	8.571.181,46
1804	554.594,18	8.571.177,89
1805	554.593,91	8.571.176,32
1806	554.594,09	8.571.174,75
1807	554.594,40	8.571.171,41
1808	554.592,43	8.571.166,40
1809	554.591,52	8.571.166,03
1810	554.590,85	8.571.164,06
1811	554.590,44	8.571.163,61
1812	554.591,54	8.571.159,16
1813	554.586,02	8.571.149,20
1814	554.584,94	8.571.149,05
1815	554.583,82	8.571.147,76
1816	554.583,97	8.571.146,09
1817	554.581,88	8.571.142,22
1818	554.581,73	8.571.142,09
1819	554.581,67	8.571.141,33
1820	554.581,81	8.571.139,30
1821	554.581,63	8.571.137,85
1822	554.585,41	8.571.134,80
1823	554.583,02	8.571.126,93

PONTO	X	Y
1824	554.583,94	8.571.126,41
1825	554.583,26	8.571.125,17
1826	554.591,18	8.571.121,03
1827	554.590,34	8.571.119,40
1828	554.590,43	8.571.119,35
1829	554.595,03	8.571.126,80
1830	554.592,59	8.571.128,40
1831	554.600,31	8.571.141,38
1832	554.601,50	8.571.140,61
1833	554.603,90	8.571.145,77
1834	554.620,87	8.571.135,29
1835	554.611,16	8.571.118,76
1836	554.615,76	8.571.115,49
1837	554.612,56	8.571.109,90
1838	554.620,35	8.571.117,03
1839	554.619,75	8.571.117,55
1840	554.623,79	8.571.121,25
1841	554.623,78	8.571.122,08
1842	554.618,44	8.571.127,41
1843	554.628,12	8.571.137,47
1844	554.628,65	8.571.137,01
1845	554.640,23	8.571.147,93
1846	554.640,76	8.571.147,33
1847	554.642,79	8.571.149,44
1848	554.640,94	8.571.151,35
1849	554.635,89	8.571.156,24
1850	554.645,80	8.571.167,33
1851	554.649,87	8.571.171,91
1852	554.647,89	8.571.175,63
1853	554.649,43	8.571.177,44
1854	554.648,51	8.571.180,49
1855	554.651,93	8.571.182,63
1856	554.650,73	8.571.184,46
1857	554.648,88	8.571.187,99
1858	554.642,81	8.571.195,43
1859	554.654,82	8.571.207,44
1860	554.661,69	8.571.200,80
1861	554.664,17	8.571.202,86
1862	554.654,54	8.571.213,25
1863	554.667,28	8.571.227,72
1864	554.670,29	8.571.225,47
1865	554.671,86	8.571.227,04
1866	554.677,59	8.571.220,64
1867	554.679,69	8.571.221,89
1868	554.684,20	8.571.216,51
1869	554.695,37	8.571.225,74
1870	554.699,74	8.571.221,60
1871	554.702,41	8.571.223,27
1872	554.705,85	8.571.219,40
1873	554.706,29	8.571.219,79
1874	554.712,97	8.571.216,12
1875	554.715,13	8.571.218,65
1876	554.723,30	8.571.213,00
1877	554.723,84	8.571.213,51
1878	554.718,56	8.571.218,58
1879	554.728,31	8.571.232,52
1880	554.734,06	8.571.232,52
1881	554.734,88	8.571.231,91
1882	554.738,13	8.571.235,60
1883	554.743,13	8.571.232,07

PONTO	X	Y
1884	554.744,49	8.571.233,58
1885	554.745,80	8.571.232,76
1886	554.748,55	8.571.236,05
1887	554.751,69	8.571.234,16
1888	554.752,72	8.571.235,19
1889	554.752,72	8.571.237,89
1890	554.757,58	8.571.242,75
1891	554.757,62	8.571.242,74
1892	554.762,85	8.571.250,30
1893	554.765,33	8.571.249,06
1894	554.767,43	8.571.251,64
1895	554.765,28	8.571.253,35
1896	554.767,98	8.571.256,50
1897	554.767,74	8.571.256,77
1898	554.772,74	8.571.265,87
1899	554.771,49	8.571.270,33
1900	554.773,49	8.571.271,75
1901	554.772,41	8.571.272,53
1902	554.786,69	8.571.282,96
1903	554.786,70	8.571.282,94
1904	554.794,58	8.571.289,49
1905	554.794,76	8.571.289,32
1906	554.796,12	8.571.290,70
1907	554.798,49	8.571.292,69
1908	554.801,97	8.571.294,16
1909	554.803,64	8.571.293,78
1910	554.804,65	8.571.295,82
1911	554.814,53	8.571.299,39
1912	554.816,18	8.571.297,25
1913	554.816,80	8.571.297,46
1914	554.819,06	8.571.298,52
1915	554.822,02	8.571.298,99
1916	554.822,77	8.571.300,73
1917	554.823,81	8.571.301,25
1918	554.827,25	8.571.305,07
1919	554.839,79	8.571.307,68
1920	554.839,89	8.571.307,38
1921	554.840,72	8.571.308,02
1922	554.843,72	8.571.309,39
1923	554.843,72	8.571.309,39
1924	554.844,03	8.571.311,50
1925	554.845,82	8.571.311,72
1926	554.846,19	8.571.314,14
1927	554.851,35	8.571.317,40
1928	554.854,63	8.571.317,14
1929	554.854,77	8.571.317,99
1930	554.855,66	8.571.320,35
1931	554.856,70	8.571.322,85
1932	554.862,05	8.571.326,80
1933	554.867,62	8.571.325,03
1934	554.868,14	8.571.324,73
1935	554.870,50	8.571.324,62
1936	554.871,35	8.571.326,12
1937	554.874,67	8.571.326,68
1938	554.875,12	8.571.327,03
1939	554.876,11	8.571.327,59
1940	554.878,18	8.571.329,65
1941	554.885,19	8.571.329,49
1942	554.888,37	8.571.328,37
1943	554.889,71	8.571.330,04

PONTO	X	Y
1944	554.893,53	8.571.331,14
1945	554.896,69	8.571.331,59
1946	554.899,41	8.571.331,69
1947	554.901,60	8.571.331,62
1948	554.902,64	8.571.336,04
1949	554.909,36	8.571.337,20
1950	554.918,32	8.571.334,22
1951	554.918,33	8.571.334,26
1952	554.923,63	8.571.335,76
1953	554.935,44	8.571.333,09
1954	554.934,98	8.571.329,23
1955	554.935,11	8.571.329,22
1956	554.939,16	8.571.326,13
1957	554.940,07	8.571.323,39
1958	554.940,34	8.571.322,70
1959	554.941,74	8.571.321,70
1960	554.943,51	8.571.321,30
1961	554.944,45	8.571.320,24
1962	554.945,18	8.571.320,24
1963	554.947,90	8.571.318,51
1964	554.949,64	8.571.318,16
1965	554.953,16	8.571.316,03
1966	554.955,92	8.571.315,41
1967	554.956,80	8.571.314,16
1968	554.959,20	8.571.314,08
1969	554.961,93	8.571.310,23
1970	554.963,23	8.571.307,08
1971	554.963,12	8.571.304,99
1972	554.965,25	8.571.303,72
1973	554.968,66	8.571.303,72
1974	554.978,21	8.571.294,93
1975	554.976,37	8.571.292,48
1976	554.977,09	8.571.291,78
1977	554.983,46	8.571.284,65
1978	554.979,27	8.571.281,87
1979	554.979,47	8.571.280,42
1980	554.978,40	8.571.279,75
1981	554.980,26	8.571.277,16
1982	554.977,17	8.571.273,99
1983	554.981,44	8.571.270,63
1984	554.981,44	8.571.264,49
1985	554.979,72	8.571.263,32
1986	554.983,04	8.571.257,10
1987	554.993,36	8.571.257,54
1988	554.994,87	8.571.253,41
1989	554.997,11	8.571.253,97
1990	555.004,21	8.571.235,12
1991	555.000,10	8.571.232,52
1992	555.002,01	8.571.225,11
1993	554.998,98	8.571.223,53
1994	554.997,99	8.571.218,88
1995	554.991,59	8.571.219,46
1996	554.992,17	8.571.215,38
1997	554.987,05	8.571.213,10
1998	554.987,05	8.571.212,18
1999	554.987,12	8.571.212,14
2000	554.989,32	8.571.211,14
2001	554.991,07	8.571.208,49
2002	554.994,50	8.571.209,43
2003	554.997,09	8.571.203,62

PONTO	X	Y
2004	554.997,39	8.571.201,62
2005	554.999,53	8.571.201,62
2006	554.999,69	8.571.192,83
2007	555.005,50	8.571.192,10
2008	555.008,99	8.571.175,30
2009	555.007,51	8.571.174,97
2010	555.008,11	8.571.167,58
2011	555.003,43	8.571.166,51
2012	555.003,52	8.571.165,18
2013	555.010,19	8.571.165,09
2014	555.012,72	8.571.154,60
2015	555.013,19	8.571.148,90
2016	555.012,87	8.571.144,31
2017	555.013,15	8.571.144,31
2018	555.013,55	8.571.139,59
2019	555.018,51	8.571.139,59
2020	555.018,17	8.571.124,97
2021	555.013,63	8.571.124,69
2022	555.013,70	8.571.123,27
2023	555.013,47	8.571.123,09
2024	555.013,72	8.571.120,85
2025	555.014,52	8.571.120,85
2026	555.015,92	8.571.115,45
2027	555.017,77	8.571.115,45
2028	555.017,86	8.571.111,41
2029	555.019,70	8.571.112,45
2030	555.024,83	8.571.110,53
2031	555.026,54	8.571.108,48
2032	555.028,82	8.571.109,47
2033	555.033,64	8.571.102,74
2034	555.035,66	8.571.094,16
2035	555.031,32	8.571.092,26
2036	555.031,75	8.571.089,72
2037	555.032,51	8.571.084,05
2038	555.034,81	8.571.084,49
2039	555.036,37	8.571.081,76
2040	555.043,87	8.571.082,08
2041	555.045,24	8.571.071,76
2042	555.045,24	8.571.070,50
2043	555.046,28	8.571.068,72
2044	555.046,33	8.571.068,52
2045	555.046,90	8.571.068,33
2046	555.049,05	8.571.065,11
2047	555.054,57	8.571.067,10
2048	555.055,43	8.571.062,43
2049	555.058,43	8.571.063,01
2050	555.062,51	8.571.058,37
2051	555.062,45	8.571.055,73
2052	555.063,05	8.571.055,73
2053	555.063,55	8.571.049,92
2054	555.064,94	8.571.049,92
2055	555.064,69	8.571.041,60
2056	555.068,60	8.571.041,60
2057	555.069,74	8.571.026,93
2058	555.075,32	8.571.027,19
2059	555.077,30	8.571.009,82
2060	555.073,63	8.571.009,70
2061	555.073,73	8.571.005,83
2062	555.072,61	8.571.005,83
2063	555.074,55	8.571.004,60

PONTO	X	Y
2064	555.074,41	8.571.002,00
2065	555.075,71	8.571.001,53
2066	555.077,88	8.571.000,19
2067	555.082,51	8.570.995,93
2068	555.085,38	8.570.991,22
2069	555.088,33	8.570.985,90
2070	555.089,94	8.570.980,28
2071	555.091,35	8.570.973,63
2072	555.090,88	8.570.967,44
2073	555.088,26	8.570.960,65
2074	555.083,90	8.570.954,92
2075	555.080,30	8.570.950,64
2076	555.079,25	8.570.950,15
2077	555.079,25	8.570.946,88
2078	555.079,62	8.570.940,54
2079	555.080,83	8.570.933,16
2080	555.083,23	8.570.921,18
2081	555.085,17	8.570.914,11
2082	555.086,47	8.570.909,92
2083	555.090,11	8.570.903,12
2084	555.095,95	8.570.895,86
2085	555.103,44	8.570.889,03
2086	555.113,77	8.570.882,18
2087	555.127,24	8.570.875,38
2088	555.142,25	8.570.872,07
2089	555.160,71	8.570.870,83
2090	555.170,95	8.570.871,32
2091	555.174,67	8.570.873,97
2092	555.181,90	8.570.879,16
2093	555.192,55	8.570.882,27
2094	555.202,23	8.570.886,89
2095	555.214,83	8.570.891,25
2096	555.225,40	8.570.891,11
2097	555.231,45	8.570.891,98
2098	555.237,33	8.570.896,55
2099	555.244,38	8.570.901,95
2100	555.254,86	8.570.907,27
2101	555.263,20	8.570.910,34
2102	555.268,50	8.570.912,36
2103	555.275,38	8.570.917,31
2104	555.281,64	8.570.920,44
2105	555.288,85	8.570.924,28
2106	555.298,81	8.570.925,34
2107	555.303,38	8.570.923,98
2108	555.310,46	8.570.923,83
2109	555.313,20	8.570.922,53
2110	555.322,86	8.570.923,28
2111	555.346,77	8.570.900,39
2112	555.346,08	8.570.901,73
2113	555.345,30	8.570.906,57
2114	555.344,88	8.570.909,99
2115	555.344,31	8.570.916,50
2116	555.345,92	8.570.923,10
2117	555.352,59	8.570.929,89
2118	555.355,23	8.570.933,25
2119	555.355,97	8.570.934,23
2120	555.354,15	8.570.939,02
2121	555.357,54	8.570.944,28
2122	555.361,42	8.570.948,00
2123	555.363,53	8.570.947,20

PONTO	X	Y
2124	555.365,20	8.570.949,00
2125	555.367,41	8.570.950,36
2126	555.368,64	8.570.951,87
2127	555.369,55	8.570.952,97
2128	555.370,62	8.570.955,46
2129	555.374,38	8.570.959,21
2130	555.377,22	8.570.961,44
2131	555.381,50	8.570.965,29
2132	555.384,04	8.570.966,62
2133	555.385,68	8.570.967,97
2134	555.388,33	8.570.970,61
2135	555.391,35	8.570.973,12
2136	555.392,24	8.570.974,45
2137	555.394,50	8.570.978,19
2138	555.399,18	8.570.982,44
2139	555.399,40	8.570.984,22
2140	555.400,55	8.570.987,57
2141	555.402,95	8.570.990,53
2142	555.404,91	8.570.992,74
2143	555.407,41	8.570.994,65
2144	555.408,78	8.570.995,62
2145	555.410,02	8.570.997,08
2146	555.412,23	8.570.999,21
2147	555.412,83	8.570.999,75
2148	555.413,08	8.571.000,32
2149	555.414,22	8.571.003,83
2150	555.418,17	8.571.007,00
2151	555.419,89	8.571.007,92
2152	555.420,74	8.571.008,81
2153	555.421,76	8.571.009,72
2154	555.421,72	8.571.011,07
2155	555.423,04	8.571.015,04
2156	555.423,43	8.571.015,31
2157	555.423,30	8.571.015,49
2158	555.423,30	8.571.020,15
2159	555.424,88	8.571.023,43
2160	555.425,68	8.571.024,70
2161	555.425,62	8.571.025,66
2162	555.425,26	8.571.028,51
2163	555.424,40	8.571.032,46
2164	555.424,26	8.571.036,74
2165	555.423,97	8.571.038,57
2166	555.423,48	8.571.039,40
2167	555.421,67	8.571.042,41
2168	555.421,20	8.571.047,42
2169	555.422,38	8.571.051,72
2170	555.423,16	8.571.053,00
2171	555.423,07	8.571.054,62
2172	555.422,53	8.571.056,34
2173	555.421,93	8.571.057,29
2174	555.420,65	8.571.058,20
2175	555.418,12	8.571.059,28
2176	555.415,34	8.571.062,62
2177	555.415,07	8.571.063,43
2178	555.413,87	8.571.064,17
2179	555.411,49	8.571.066,06
2180	555.411,15	8.571.066,49
2181	555.408,66	8.571.066,49
2182	555.404,10	8.571.069,03
2183	555.402,50	8.571.072,86

PONTO	X	Y
2184	555.402,02	8.571.074,14
2185	555.401,05	8.571.075,29
2186	555.398,88	8.571.077,89
2187	555.398,26	8.571.078,47
2188	555.396,11	8.571.078,93
2189	555.394,26	8.571.079,91
2190	555.393,28	8.571.080,05
2191	555.391,09	8.571.078,23
2192	555.386,33	8.571.077,03
2193	555.381,76	8.571.077,55
2194	555.377,99	8.571.079,04
2195	555.374,86	8.571.080,10
2196	555.372,12	8.571.080,63
2197	555.370,40	8.571.080,40
2198	555.368,77	8.571.078,93
2199	555.363,45	8.571.077,15
2200	555.359,15	8.571.077,94
2201	555.356,37	8.571.079,38
2202	555.355,29	8.571.079,40
2203	555.349,36	8.571.079,58
2204	555.347,12	8.571.080,82
2205	555.346,65	8.571.080,92
2206	555.345,68	8.571.080,84
2207	555.343,63	8.571.079,95
2208	555.339,66	8.571.078,34
2209	555.338,80	8.571.078,67
2210	555.340,35	8.571.071,03
2211	555.336,28	8.571.070,50
2212	555.336,01	8.571.067,82
2213	555.324,12	8.571.068,21
2214	555.323,94	8.571.078,51
2215	555.323,21	8.571.078,77
2216	555.322,29	8.571.078,96
2217	555.321,29	8.571.078,75
2218	555.319,56	8.571.078,45
2219	555.317,37	8.571.077,80
2220	555.312,99	8.571.076,45
2221	555.305,74	8.571.079,40
2222	555.305,72	8.571.079,94
2223	555.301,27	8.571.080,09
2224	555.295,29	8.571.080,65
2225	555.289,86	8.571.081,33
2226	555.285,11	8.571.082,88
2227	555.280,26	8.571.085,28
2228	555.275,28	8.571.088,08
2229	555.271,51	8.571.090,64
2230	555.266,90	8.571.094,49
2231	555.263,35	8.571.097,52
2232	555.258,63	8.571.102,89
2233	555.254,68	8.571.107,86
2234	555.252,88	8.571.112,50
2235	555.251,54	8.571.117,46
2236	555.250,65	8.571.120,55
2237	555.248,80	8.571.122,63
2238	555.246,12	8.571.125,40
2239	555.245,05	8.571.128,47
2240	555.243,56	8.571.130,94
2241	555.241,84	8.571.133,87
2242	555.241,42	8.571.137,40
2243	555.241,31	8.571.139,40

PONTO	X	Y
2244	555.240,35	8.571.140,47
2245	555.239,08	8.571.142,63
2246	555.238,17	8.571.145,80
2247	555.238,77	8.571.149,33
2248	555.239,00	8.571.149,81
2249	555.238,18	8.571.150,25
2250	555.235,24	8.571.152,44
2251	555.234,04	8.571.157,91
2252	555.234,55	8.571.158,96
2253	555.234,23	8.571.160,15
2254	555.233,27	8.571.161,96
2255	555.231,33	8.571.165,24
2256	555.228,59	8.571.170,17
2257	555.226,72	8.571.174,10
2258	555.222,74	8.571.180,00
2259	555.218,35	8.571.186,52
2260	555.216,93	8.571.189,44
2261	555.215,06	8.571.192,24
2262	555.213,11	8.571.195,32
2263	555.211,64	8.571.197,48
2264	555.209,36	8.571.199,88
2265	555.206,56	8.571.203,27
2266	555.205,29	8.571.204,55
2267	555.203,45	8.571.205,48
2268	555.201,90	8.571.206,36
2269	555.200,10	8.571.207,60
2270	555.197,73	8.571.210,86
2271	555.197,57	8.571.214,60
2272	555.197,63	8.571.215,17
2273	555.196,47	8.571.217,52
2274	555.195,46	8.571.217,78
2275	555.192,23	8.571.220,36
2276	555.189,25	8.571.223,66
2277	555.185,66	8.571.228,69
2278	555.184,22	8.571.233,74
2279	555.184,41	8.571.234,93
2280	555.184,04	8.571.235,28
2281	555.182,11	8.571.236,66
2282	555.180,76	8.571.237,11
2283	555.177,91	8.571.237,64
2284	555.174,63	8.571.239,16
2285	555.172,92	8.571.240,47
2286	555.172,67	8.571.240,51
2287	555.167,83	8.571.240,98
2288	555.163,01	8.571.243,89
2289	555.161,42	8.571.246,82
2290	555.160,75	8.571.247,61
2291	555.157,57	8.571.249,55
2292	555.155,63	8.571.251,02
2293	555.155,02	8.571.251,29
2294	555.154,00	8.571.251,29
2295	555.150,52	8.571.251,65
2296	555.147,09	8.571.253,78
2297	555.146,24	8.571.254,89
2298	555.145,67	8.571.255,12
2299	555.143,76	8.571.255,75
2300	555.143,04	8.571.256,14
2301	555.142,92	8.571.256,03
2302	555.138,89	8.571.254,75
2303	555.134,52	8.571.255,83

PONTO	X	Y
2304	555.131,04	8.571.258,53
2305	555.129,89	8.571.261,51
2306	555.129,09	8.571.263,61
2307	555.129,02	8.571.263,71
2308	555.127,25	8.571.264,92
2309	555.124,84	8.571.266,61
2310	555.122,36	8.571.267,85
2311	555.119,20	8.571.269,40
2312	555.116,16	8.571.271,11
2313	555.112,73	8.571.273,63
2314	555.110,16	8.571.275,80
2315	555.107,37	8.571.277,69
2316	555.104,86	8.571.281,06
2317	555.104,31	8.571.285,67
2318	555.104,25	8.571.286,22
2319	555.103,21	8.571.286,89
2320	555.101,03	8.571.289,47
2321	555.100,34	8.571.290,16
2322	555.099,70	8.571.290,33
2323	555.096,20	8.571.291,20
2324	555.092,79	8.571.292,81
2325	555.089,24	8.571.294,66
2326	555.083,81	8.571.298,20
2327	555.080,55	8.571.302,56
2328	555.077,07	8.571.306,49
2329	555.073,87	8.571.308,62
2330	555.069,98	8.571.310,99
2331	555.066,22	8.571.313,75
2332	555.060,56	8.571.317,86
2333	555.059,06	8.571.323,51
2334	555.058,88	8.571.328,72
2335	555.060,22	8.571.333,25
2336	555.062,62	8.571.337,51
2337	555.067,08	8.571.342,44
2338	555.070,55	8.571.345,65
2339	555.072,09	8.571.347,71
2340	555.074,10	8.571.352,31
2341	555.076,84	8.571.356,92
2342	555.079,97	8.571.360,55
2343	555.083,47	8.571.365,02
2344	555.088,27	8.571.372,39
2345	555.092,36	8.571.376,69
2346	555.096,39	8.571.381,41
2347	555.103,24	8.571.388,25
2348	555.109,72	8.571.391,97
2349	555.112,38	8.571.394,34
2350	555.113,98	8.571.395,86
2351	555.113,63	8.571.396,54
2352	555.111,46	8.571.400,34
2353	555.111,46	8.571.406,53
2354	555.112,97	8.571.413,35
2355	555.117,99	8.571.418,62
2356	555.124,18	8.571.424,37
2357	555.129,19	8.571.427,41
2358	555.133,50	8.571.430,69
2359	555.139,17	8.571.435,02
2360	555.142,49	8.571.437,77
2361	555.146,43	8.571.441,45
2362	555.150,47	8.571.444,93
2363	555.153,11	8.571.448,51

PONTO	X	Y
2364	555.158,44	8.571.453,08
2365	555.165,55	8.571.456,03
2366	555.171,53	8.571.460,04
2367	555.175,46	8.571.463,14
2368	555.176,36	8.571.465,31
2369	555.176,96	8.571.470,25
2370	555.178,52	8.571.479,76
2371	555.181,78	8.571.486,43
2372	555.186,73	8.571.492,27
2373	555.192,79	8.571.497,34
2374	555.200,83	8.571.502,15
2375	555.209,15	8.571.505,09
2376	555.214,83	8.571.507,09
2377	556.108,42	8.571.300,23
2378	556.108,40	8.571.300,22
2379	556.100,32	8.571.296,05
2380	556.108,42	8.571.300,23

*Coordenadas em UTM SIRGAS 2000 ZONA 24S

ESTIMATIVA E COMPENSAÇÃO DA RENÚNCIA DE RECEITA

Tributo	Modalidade	Programas	2024		2025		2026	
			R\$		R\$		R\$	
ISS	Isonção	Isonção STCO	R\$	21.423.623	R\$	22.280.568	R\$	23.171.791
ISS	Benefícios financeiros e creditícios	Programa Viva Cultura	R\$	6.000.000	R\$	-	R\$	-
IPTU	Benefícios financeiros e creditícios	Programa Viva Cultura	R\$	914.678	R\$	951.265	R\$	989.316
ITIV	Diferimento	Programa Revitalizar	R\$	399.078	R\$	415.041	R\$	431.643
IPTU	Redução de base de cálculo	Programa Revitalizar	R\$	296.771	R\$	308.641	R\$	320.987
ISS	Isonção	Programa Revitalizar	R\$	50.000	R\$	50.000	R\$	50.000
ISS	Benefícios financeiros e creditícios	Programa de Incentivo ao Desenvolvimento Sustentável e Inovação - PIDI	R\$	1.041.300	R\$	1.082.952	R\$	1.126.270
IPTU	Benefícios financeiros e creditícios	Programa de Incentivo ao Desenvolvimento Sustentável e Inovação - PIDI	R\$	1.041.300	R\$	1.082.952	R\$	1.126.270
ITIV	Isonção parcial	Lei da Pandemia	R\$	2.634.489	R\$	2.739.869	R\$	2.849.463
IPTU	Isonção parcial	Lei da Pandemia	R\$	1.111.857	R\$	1.156.332	R\$	1.202.585
ISS	Isonção parcial	Lei da Pandemia (Plataformas Digitais)	R\$	878.340	R\$	913.473	R\$	950.012
IPTU	Benefícios financeiros e creditícios	IPTU Verde	R\$	468.585	R\$	487.328	R\$	506.822
IPTU	Benefícios financeiros e creditícios	IPTU Amarelo	R\$	65.081	R\$	67.685	R\$	70.392
ISS	Redução de alíquota	Política Municipal de Inovação - INCENTIVOS FISCAIS A START UPS	R\$	6.872.580	R\$	7.147.483	R\$	7.433.383
TFF	Isonção	Política Municipal de Inovação - INCENTIVOS FISCAIS A START UPS	R\$	104.208	R\$	108.376	R\$	112.711
IPTU	Isonção parcial	Política Municipal de Inovação - INCENTIVOS FISCAIS A START UPS	R\$	78.155	R\$	81.281	R\$	84.532
ITIV	Isonção	Política Municipal de Inovação - INCENTIVOS FISCAIS A START UPS	R\$	17.321	R\$	18.014	R\$	18.734
TLL	Isonção	Política Municipal de Inovação - INCENTIVOS FISCAIS A START UPS	R\$	17.244	R\$	17.934	R\$	18.651
TRCF	Isonção	Isonção STCO	R\$	5.355.906	R\$	5.570.142	R\$	5.792.948
ISS	Isonção	Programa Viva Esporte	R\$	10.000.000	R\$	10.400.000	R\$	10.816.000
ISS	Isonção	Programa de Incentivo a Empreendimentos e Moradias - RENOVA CENTRO	R\$	481.114	R\$	498.434	R\$	515.879
IPTU	Isonção	Programa de Incentivo a Empreendimentos e Moradias - RENOVA CENTRO	R\$	1.149.054	R\$	1.190.420	R\$	1.232.085
ITIV	Isonção	Programa de Incentivo a Empreendimentos e Moradias - RENOVA CENTRO	R\$	3.257.658	R\$	3.374.934	R\$	3.493.056
TRSD	Isonção	Programa de Incentivo a Empreendimentos e Moradias - RENOVA CENTRO	R\$	81.684	R\$	84.625	R\$	87.587
ISS	Benefícios financeiros e creditícios	Programa de Incentivo a Empreendimentos e Moradias - RENOVA CENTRO	R\$	-	R\$	45.030.490	R\$	46.606.557
IPTU	Redução de base de cálculo	Alteração da Lei nº 7.186 - Redução do IPTU de Mezaninos, Shoppings e Áreas comerciais	R\$	3.567.144	R\$	3.695.561	R\$	3.824.905
IPTU	Isonção	Alteração da Lei nº 7.186 - Benefício para Cooperativas de Materiais Recicláveis	R\$	97.641	R\$	101.156	R\$	104.696
TFF	Isonção	Alteração da Lei nº 7.186 - Benefício para Cooperativas de Materiais Recicláveis	R\$	30.536	R\$	31.636	R\$	32.743
ITIV	Isonção	Alteração da Lei nº 7.186 - Primeira Cessão de direito	R\$	1.412.506	R\$	1.463.357	R\$	1.514.574
TRSD	Não Incidência	Alteração da Lei nº 7.186 - Benefício para entidade sem fins lucrativos com difusão de pesquisas de conteúdos históricos e culturais	R\$	33.368	R\$	34.569	R\$	35.779
TFF	Redução de base de cálculo	Alteração da Lei nº 7.186 - Benefício para Atividade de Comércio de Automóveis Novos e Usados	R\$	390.522	R\$	404.581	R\$	418.741
Outorga Onerosa	Benefícios financeiros e creditícios	Alteração da Lei nº 9.285 - Prorrogação de desconto	R\$	9.734.730	R\$	-	R\$	-
ISS	Benefícios financeiros e creditícios	PROCULTURA	R\$	4.771.756	R\$	-	R\$	-
IPTU	Benefícios financeiros e creditícios	PROTURISMO	R\$	4.724.948	R\$	-	R\$	-
Total			R\$	88.503.176	R\$	110.789.097	R\$	114.939.112